

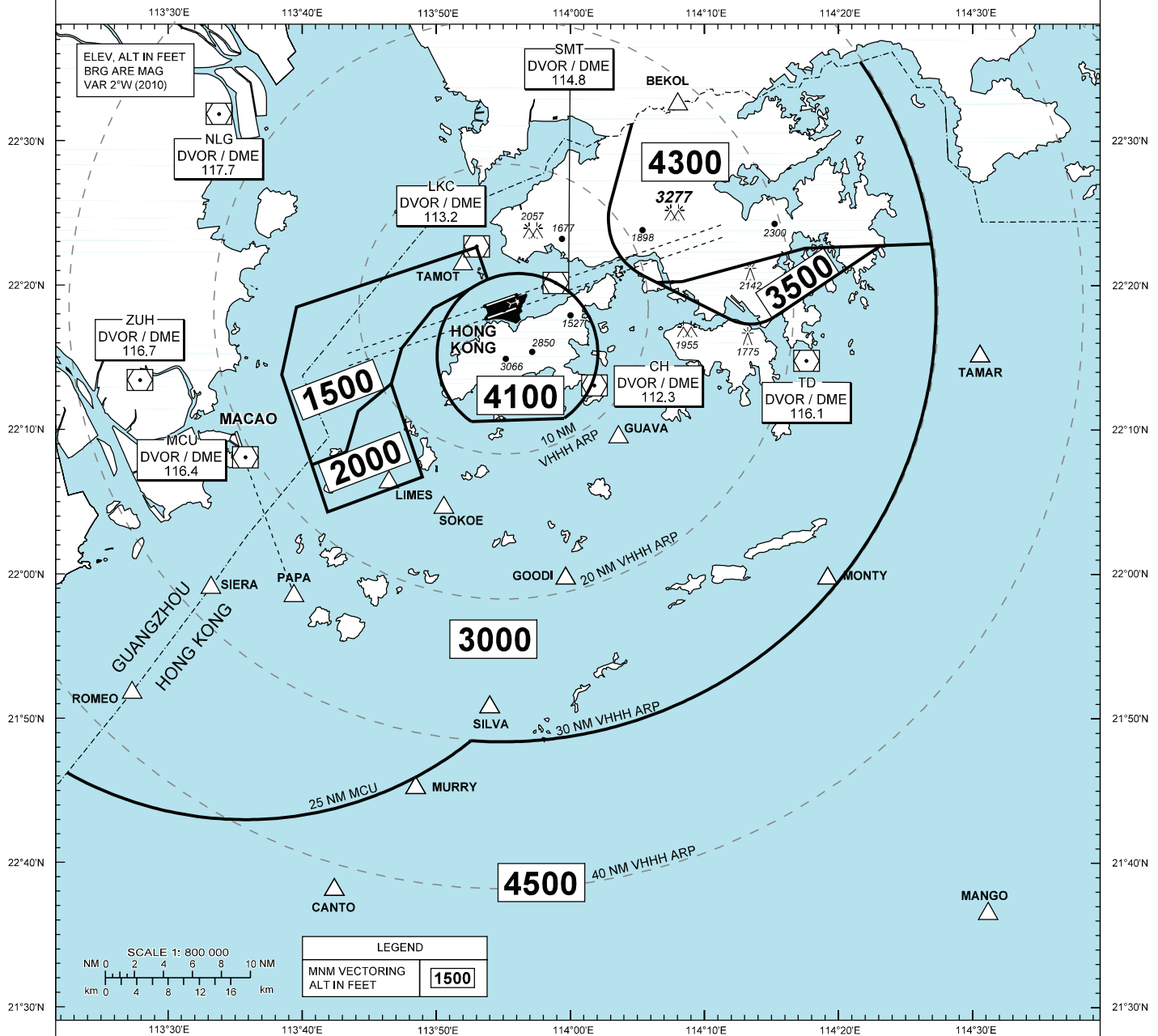
AIP HONG KONG

**ATC SURVEILLANCE MINIMUM  
ALTITUDE CHART - ICAO**

AERODROME ELEV 28 ft  
TRANSITION ALT 9 000 ft  
APP 119.1  
DIRECTOR 119.5

**HONG KONG / Intl (VHHH)**

CHARTS ONLY TO BE USED FOR CROSS-CHECKING OF ALTITUDES ASSIGNED WHILE UNDER VECTORING CONTROL



**MINIMUM ALTITUDE**

WITHIN 30 NM OF HONG KONG INTERNATIONAL AIRPORT THE MINIMUM ALTITUDE TO BE ALLOCATED BY HONG KONG RADAR IS **3 000 FT** EXCEPT WITHIN THE INDICATED AREAS AROUND THE FOLLOWING LOCATIONS :

1. MA ON SHAN, (MINIMUM ALTITUDE **3 500 FT**);
2. LANTAU ISLAND, (MINIMUM ALTITUDE **4 100 FT**);
3. TAI MO SHAN (MINIMUM ALTITUDE **4 300 FT**);
4. RWY 07L/07R INTERMEDIATE APPROACH AREA, (MINIMUM ALTITUDE **1 500 FT AND 2 000 FT**).

**NOTE**

1. A VECTORING CONTROL SERVICE CANNOT BE PROVIDED TO AIRCRAFT BELOW THE APPLICABLE MINIMUM ALTITUDE.
2. MINIMUM ALTITUDES ARE CALCULATED IN ACCORDANCE WITH ICAO NORMS (PANS ATM AND PANSOPS).
3. ONLY APPLICABLE IN HONG KONG AIRSPACE.
4. ONLY SIGNIFICANT SPOT HEIGHTS ARE SHOWN.

**COMMUNICATION FAILURE**

1. WHEN UNDER VECTORING CONTROL REFER TO AIP HONG KONG ENR 1.5-62 PARA 10.3, ENR 1.5-63 PARA 10.6 AND 10.7.
2. WHEN FOLLOWING SID OR STAR TRACK REFER TO ENR 1.5-61 PARA 10.2, ENR 1.5-63 PARA 10.4 AND 10.7.

CHANGE: Chart title. Page reference updated.  
Distance circles centred on VHHH ARP.  
MINM sector ALT box removed. AD ELEV added.

INTENTIONALLY

LEFT

BLANK