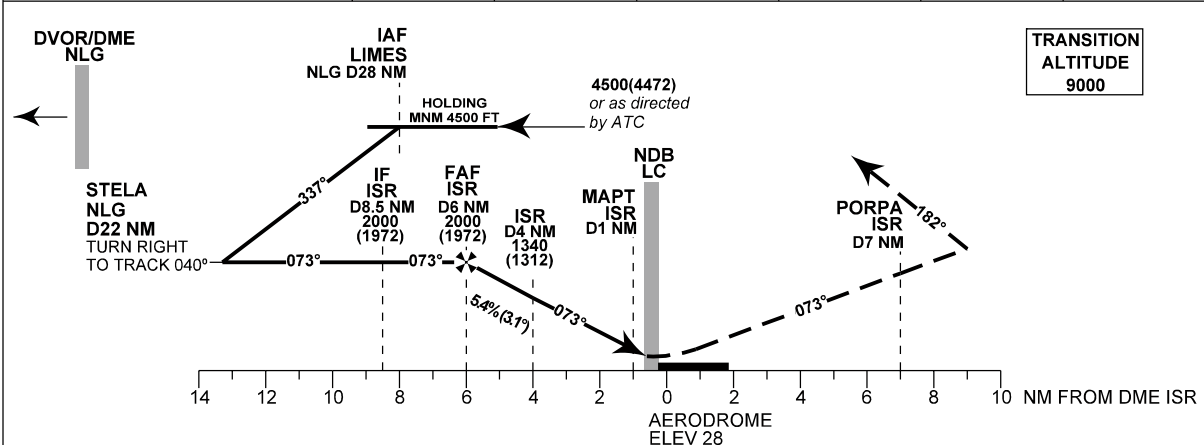
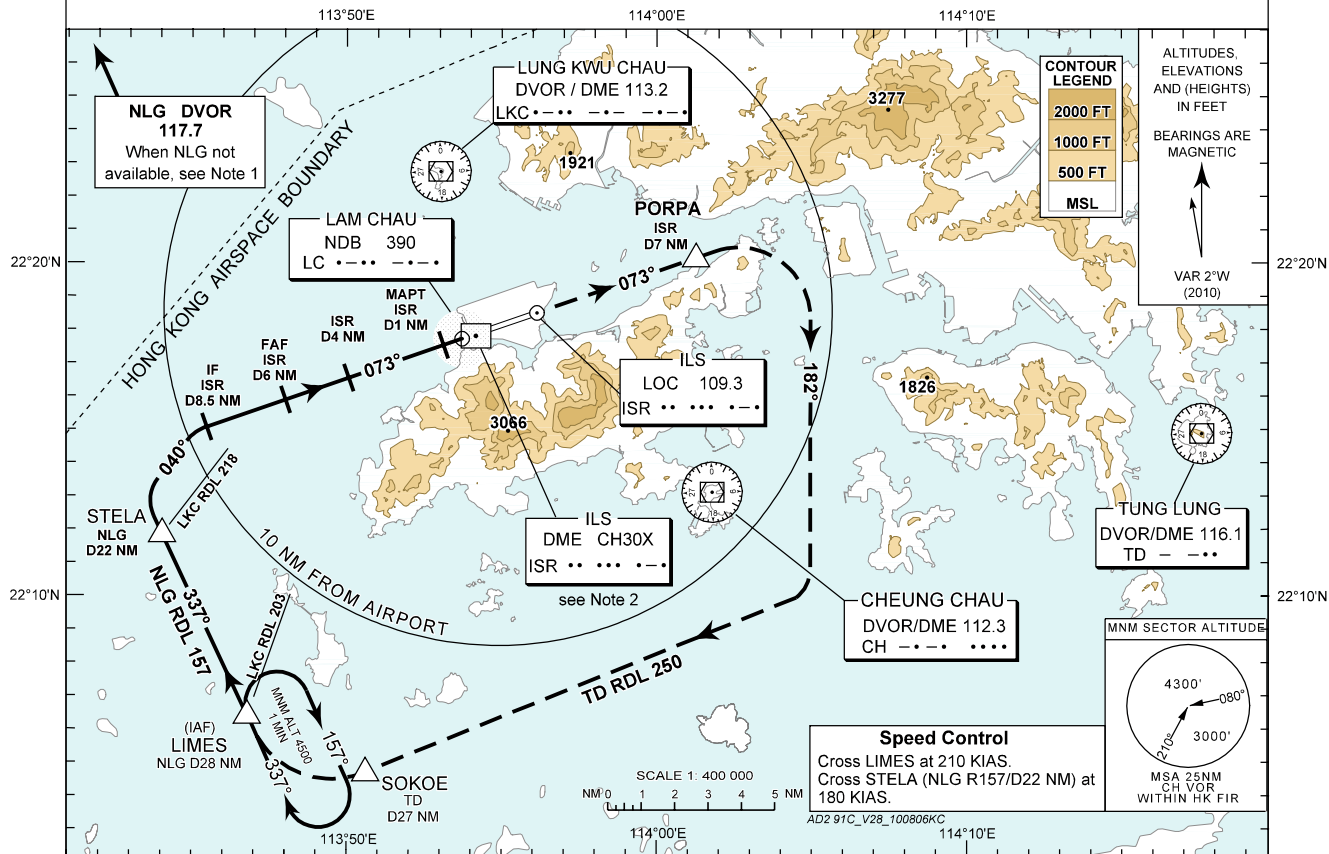


AIP HONG KONG

INSTRUMENT APPROACH CHART - ICAO	AERODROME ELEV 28 FT (HEIGHTS RELATED TO AD ELEV)	HONG KONG TOWER SOUTH 118.4 HONG KONG APPROACH 119.1 HONG KONG DIRECTOR 119.5	HONG KONG / Intl (VHHH) LOC RWY 07R
---	--	---	--

WARNING LOC ISR UNUSABLE BEYOND 25° LEFT OF COURSE AND 19° RIGHT OF COURSE



GS KT	160	140	120	100	80
FAF-MAPT 5 NM	1:52 sec	2:09 sec	2:30 sec	3:00 sec	3:45 sec
FT Per MINUTE	880	770	660	550	440

AIRCRAFT CATEGORIES	G/P INOP * OCA (OCH)	VISUAL CIRCLING
A, B, C, D	430 ft (400 ft)	NOT AVAILABLE

* This procedure requires a missed approach climb gradient of 2.5% (152 ft/NM).

MISSED APPROACH

The Missed Approach Point is at the MM Fix (ISR DME 1 NM before the landing threshold). Climb to 5,000 ft. Remain on the extended runway centreline tracking 073°M (or bearing 073°M to/from LC NDB) until PORPA (ISR DME 7 NM). At PORPA turn right to track 182°M to establish on TD DVOR RDL 250 outbound to SOKOE then turn right to LIMES. Join LIMES holding pattern or as directed by ATC.

NOTE 3 A speed restriction of 210 KIAS or less is required until established on track 182°M.
NOTE 4 Initial missed approach turn must not be made before fix PORPA (ISR DME 7 NM)

If TD DVOR IS NOT AVAILABLE

The Missed Approach Point is at the MM Fix (ISR DME 1 NM before the landing threshold). Climb to 5,000 ft. Remain on the extended runway centreline tracking 073°M (or bearing 073°M to/from LC NDB) until PORPA (ISR DME 7 NM). At PORPA turn right to track 182°M. Expect radar vectors to LIMES.

RWY 07R LOC APPROACH

Navigation Aids

Navaid/Ident	Frequency	Co-ordinates	Remarks
Localizer/ISR	109.3 MHz	22 18 29.89 N 113 56 07.90 E	Course 073°
DME/ISR	CH 30X	22 17 47.64 N 113 54 09.59 E	
CH DVOR	112.3 MHz	22 13 10.35 N 114 01 48.20 E	Co-located
CH DME	CH 70X		
LC NDB	390 kHz	22 17 43N 113 53 43E	Coverage 10 NM
LKC DVOR	113.2 MHz	22 22 44.12 N 113 53 01.50 E	Co-located
LKC DME	CH 79X		
NLG DVOR	117.7 MHz	22 31 54 N 113 33 48 E	Co-located
NLG DME	CH 124X		
TD DVOR	116.1 MHz	22 14 52.42 N 114 17 35.30 E	Co-located
TD DME	CH 108X		

Significant Points

Significant Point	Co-ordinates	Cross Reference from Navaid
LIMES	22 06 25.60 N 113 46 32.60 E	NLG RDL 157/DME 28.0 NM or CH RDL 247/DME 15.7 NM
STELA	22 11 53.29 N 113 43 49.11 E	NLG RDL 157/DME 22.0 NM
IF		ISR DME 8.5 NM
FAF		ISR DME 6.0 NM
MAPT		ISR DME 1.0 NM
PORPA	22 20 09.1 N 114 01 16.3 E	ISR DME 7.0 NM or SMT RDL 095/DME 2.2 NM
SOKOE	22 04 41.2 N 113 50 38.1 E	TD RDL 250/DME 27.0 NM