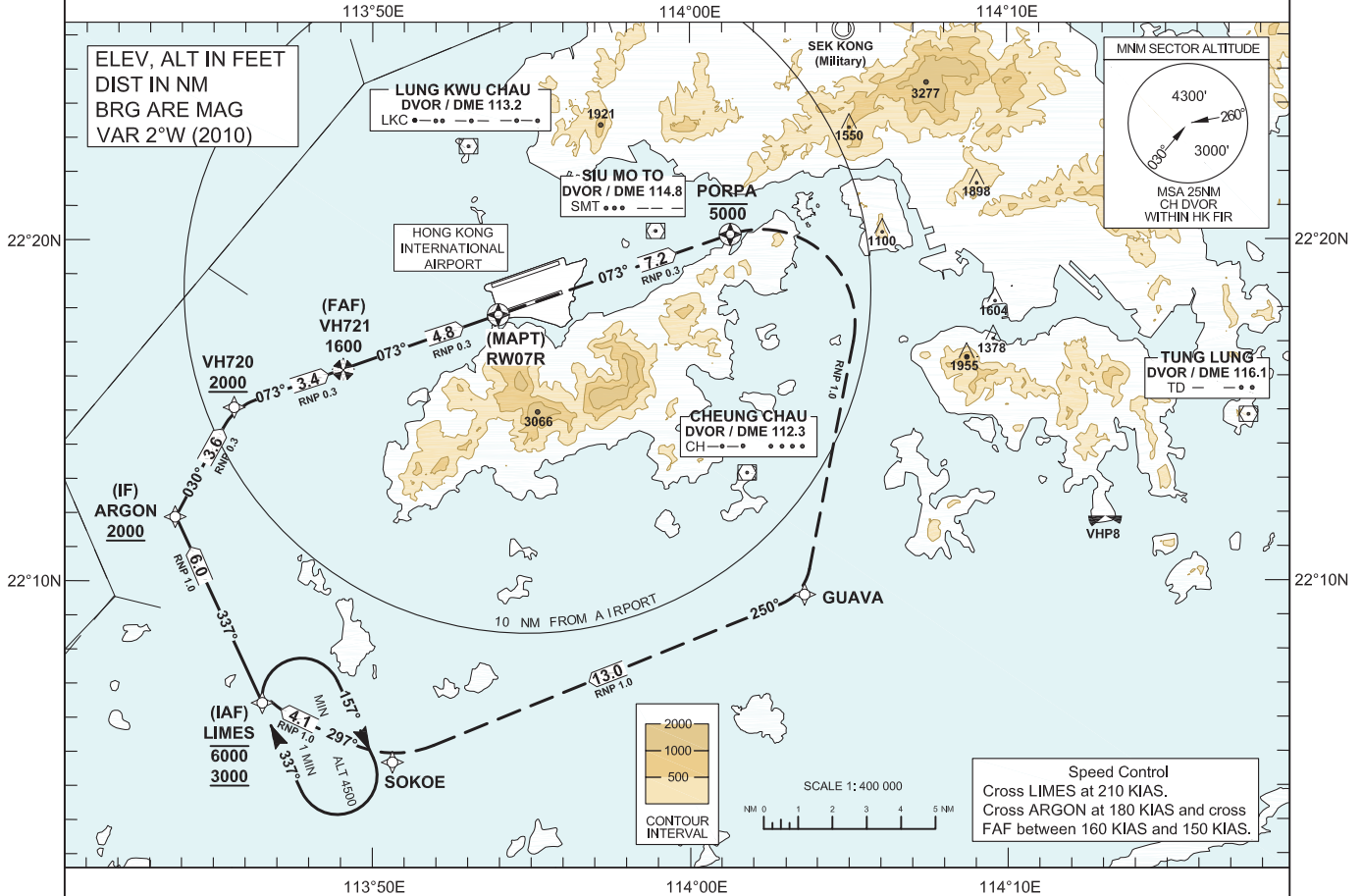


<b>INSTRUMENT APPROACH</b>	AERODROME ELEV 28 FT (HEIGHTS RELATED TO THR RWY 07R - ELEV 27 FT) MIN TEMP 0°C	HONG KONG APPROACH 119.1 HONG KONG DIRECTOR 119.5 HONG KONG TOWER SOUTH 118.4	<b>HONG KONG / Intl (VHHH)</b> <b>RNAV (RNP)</b> <b>RWY 07R</b>
----------------------------	--	---	---

**Authorization from HONG KONG CAD is Required (AIC 14/13 refers)**

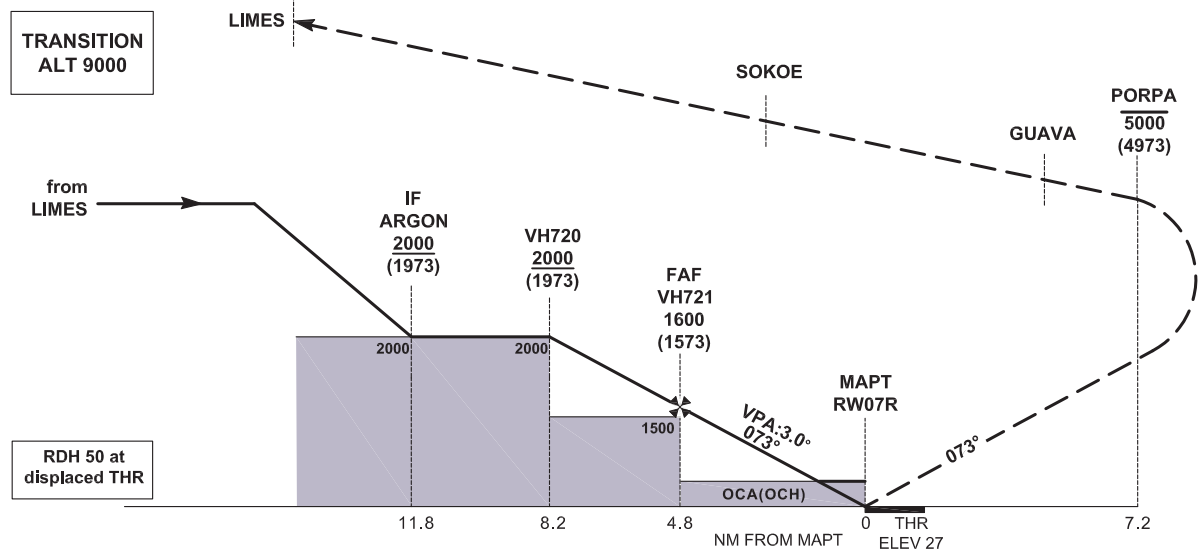
- NOTE 1 RNP AR APCH: RNP 0.3 in Intermediate, Final and Missed Approach Segment, RNP 1.0 in Initial Segment. RNP values are depicted on Plan View for each applicable leg.
- NOTE 2 Aircraft must obtain approval from Hong Kong Civil Aviation Department for RNP AR APCH. Carriage of certified GNSS receiver is mandatory.
- NOTE 3 Do not accept radar vectors inside VH720.



**MISSED APPROACH**

Climb to 5000 ft, track to **PORPA**, then right turn direct to **GUAVA**, then **SOKOE**, then **LIMES**, or as directed by ATC.  
NOTE 1 Climb gradient of 2.5% is required. (152 ft / NM)  
NOTE 2 Speed restriction of 210 KIAS is required until established on track to **GUAVA**.

**RW07R - PORPA [A5000,-R] - GUAVA [K210,R] - SOKOE[R] - LIMES**



<b>OCA (OCH)</b>	<b>System</b>	<b>A</b>	<b>B</b>	<b>C</b>	<b>D</b>	<b>DIST THR (NM)</b>	<b>2</b>	<b>3</b>	<b>4</b>	<b>5</b>
RNP 0.3	GNSS	430 (410)	430 (410)	430 (410)	430 (410)	<b>ALT (HGT) (FT)</b>	710 (683)	1030 (1003)	1350 (1323)	1670 (1643)

CHANGE: Chart Note 1, depiction of RNP values, MAP abbreviated description.

**RNAV<sub>(RNP)</sub> RWY07R**

**Coding Table**

<i>Serial Number</i>	<i>Fix</i>	<i>Path Descriptor</i>	<i>Waypoint Identifier</i>	<i>Flyover</i>	<i>Course °M</i>	<i>Magnetic Variation</i>	<i>Turn Direction</i>	<i>Altitude (ft)</i>	<i>Speed (kts)</i>	<i>VPA</i>	<i>Navigation Specification</i>
01	IAF	IF	LIMES			+2.0		-6000 +3000	210		RNP AR APCH
02	IF	TF	ARGON		337	+2.0	R	+2000	180		RNP AR APCH
03		TF	VH720		030	+2.0	R	+2000			RNP AR APCH
04	FAF	TF	VH721		073	+2.0		1600	-160 +150		RNP AR APCH
05	MAPT	TF	<b>RW07R</b>	Y	073	+2.0				-3.0	RNP AR APCH
06		TF	<b>PORPA</b>	Y		+2.0	R	- 5000			RNP AR APCH
07		DF	GUAVA			+2.0	R		210		RNP AR APCH
08		TF	SOKOE		250	+2.0	R				RNP AR APCH
09		TF	LIMES			+2.0					RNP AR APCH

**Waypoint Coordinates**

<b>Waypoint Name</b>	<b>Coordinates (WGS84)</b>	
LIMES (IAF)	22 06 25.60 N	113 46 32.60 E
ARGON (IF)	22 11 52.56 N	113 43 47.67 E
VH720	22 15 05.94 N	113 45 39.56 E
VH721 (FAF)	22 16 12.68 N	113 49 04.87 E
<b>RW07R (MAPT)</b>	22 17 48.03 N	113 53 58.00 E
<b>PORPA</b>	22 20 09.10 N	114 01 16.30 E
GUAVA	22 09 36.10 N	114 03 36.30 E
SOKOE	22 04 41.20 N	113 50 38.10 E