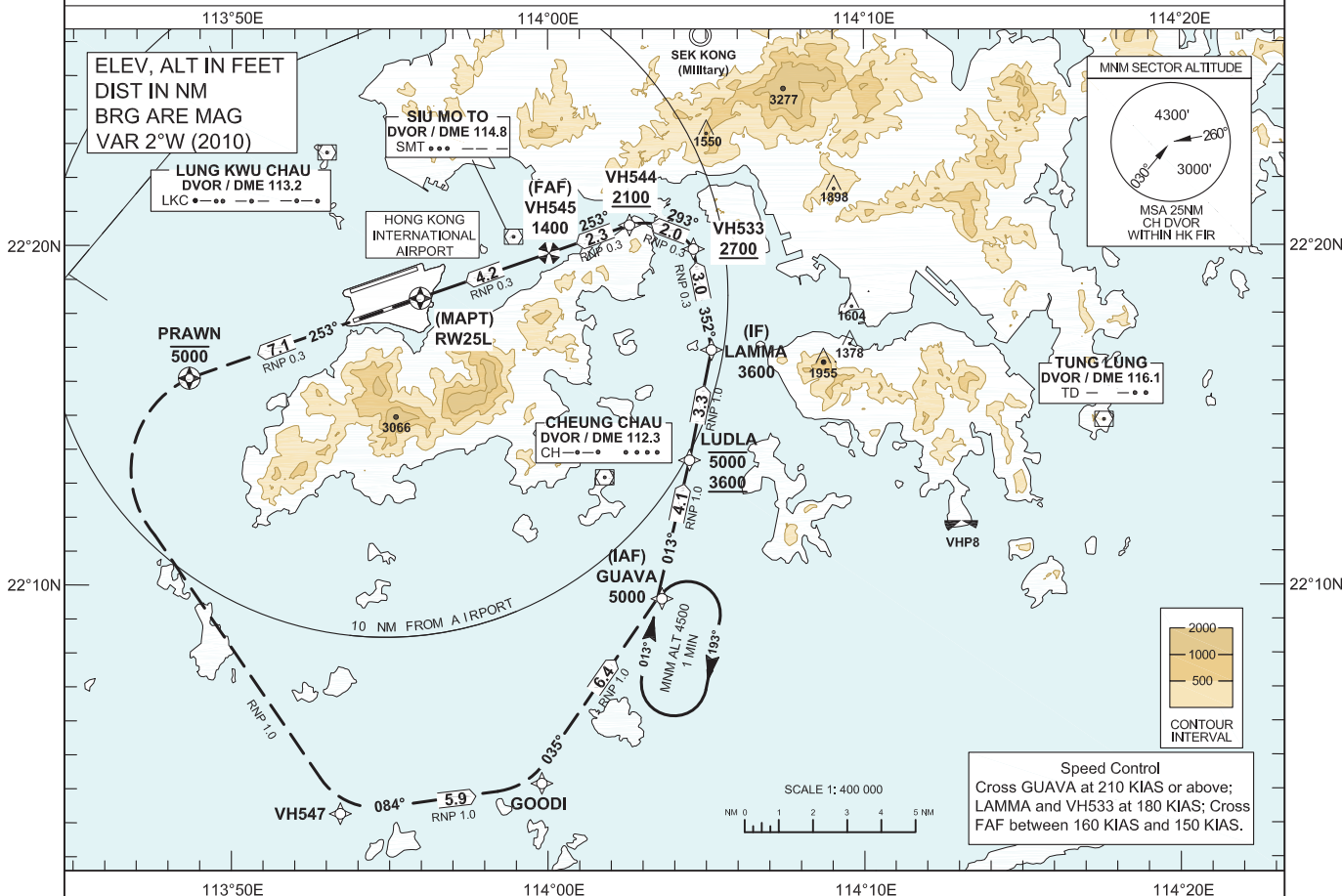


INSTRUMENT APPROACH CHART - ICAO	AERODROME ELEV 28 FT (HEIGHTS RELATED TO THR RWY 25L - ELEV 27 FT) MIN TEMP 0°C	HONG KONG APPROACH 119.1 HONG KONG DIRECTOR 119.5 HONG KONG TOWER SOUTH 118.4	HONG KONG / Intl (VHHH) RNAV (RNP) Z RWY 25L
---	---	---	---

Authorization from HONG KONG CAD is Required (AIC 14/13 refers)

- NOTE 1 RNP AR APCH: RNP 0.3 in Intermediate, Final and Missed Approach Segment, RNP 1.0 in Initial Segment. RNP values are depicted on Plan View for each applicable leg.
- NOTE 2 Aircraft must obtain approval from Hong Kong Civil Aviation Department for RNP AR APCH. Carriage of certified GNSS receiver is mandatory.
- NOTE 3 Do not accept radar vectors inside GUAVA.

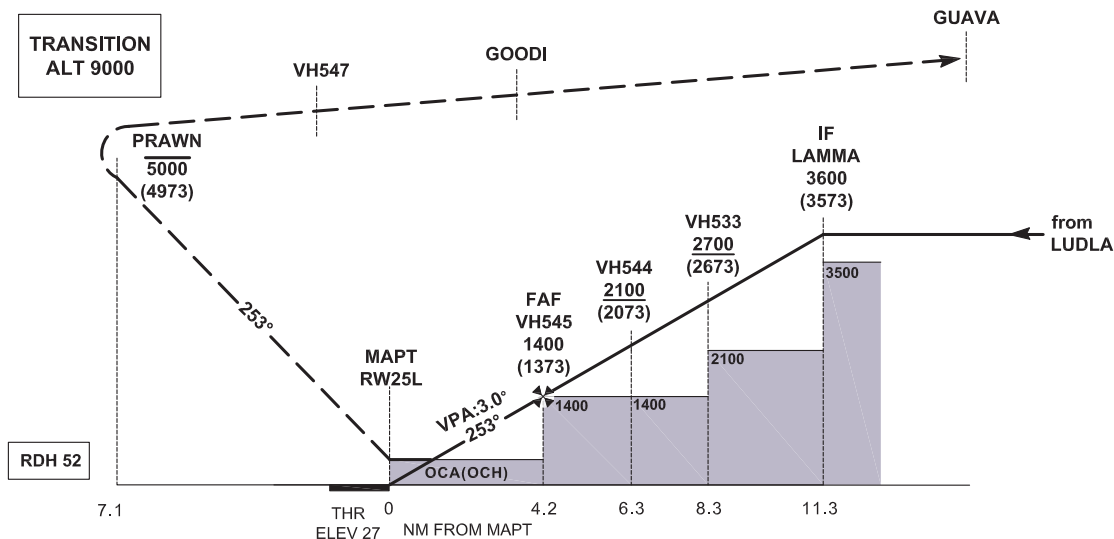


MISSED APPROACH

Climb to 5,000 ft, track to PRAWN, then turn left track direct to VH547, then left to GOODI, then left to GUAVA or as directed by ATC.

- NOTE 1 Climb gradient of 2.5% is required. (152 ft / NM)
- NOTE 2 Speed restriction of 185 KIAS is required until established on track to VH547.

RW25L - PRAWN [A5000,L] - VH547 [K185,L] - GOODI [L] - GUAVA



OCA (OCH)	System	A	B	C	D
RNP 0.3	GNSS	420 (400)	420 (400)	420 (400)	420 (400)

DIST THR (NM)	2	3	4	5
ALT (HGT) (FT)	710 (683)	1030 (1003)	1350 (1323)	1670 (1643)

CHANGE: Chart NOTE 1, depiction of RNP values. MAP abbreviated description.

RNAV_(RNP) z RWY25L

Coding Table

<i>Serial Number</i>	<i>Fix</i>	<i>Path Descriptor</i>	<i>Waypoint Identifier</i>	<i>Flyover</i>	<i>Course °M</i>	<i>Magnetic Variation</i>	<i>Turn Direction</i>	<i>Altitude (ft)</i>	<i>Speed (kts)</i>	<i>VPA</i>	<i>Navigation Specification</i>
01	IAF	IF	GUAVA			+2.0		5000	+210		RNP AR APCH
02		TF	LUDLA		013	+2.0		-5000 +3600			RNP AR APCH
03	IF	TF	LAMMA		013	+2.0	L	3600	180		RNP AR APCH
04		TF	VH533		352	+2.0	L	+2700	180		RNP AR APCH
05		TF	VH544		293	+2.0	L	+2100			RNP AR APCH
06	FAF	TF	VH545		253	+2.0		1400	-160 +150		RNP AR APCH
07	MAPT	TF	RW25L	Y	253	+2.0				-3.0	RNP AR APCH
08		TF	PRAWN	Y	253	+2.0	L	-5000			RNP AR APCH
09		DF	VH547			+2.0	L		185		RNP AR APCH
10		TF	GOODI		084	+2.0	L				RNP AR APCH
11		TF	GUAVA			+2.0					RNP AR APCH

Waypoint Coordinates

Waypoint	Coordinate (WGS84)	
GUAVA (IAF)	22 09 36.10 N	114 03 36.30 E
LUDLA	22 13 40.79 N	114 04 28.75 E
LAMMA (IF)	22 16 55.61 N	114 05 10.55 E
VH533	22 19 53.47 N	114 04 36.72 E
VH544	22 20 34.67 N	114 02 35.68 E
VH545 (FAF)	22 19 49.44 N	114 00 15.00 E
RW25L (MAPT)	22 18 26.75 N	113 55 58.16 E
PRAWN	22 16 05.40 N	113 48 40.10 E
VH547	22 03 16.39 N	113 53 26.74 E
GOODI	22 04 09.88 N	113 59 48.59 E