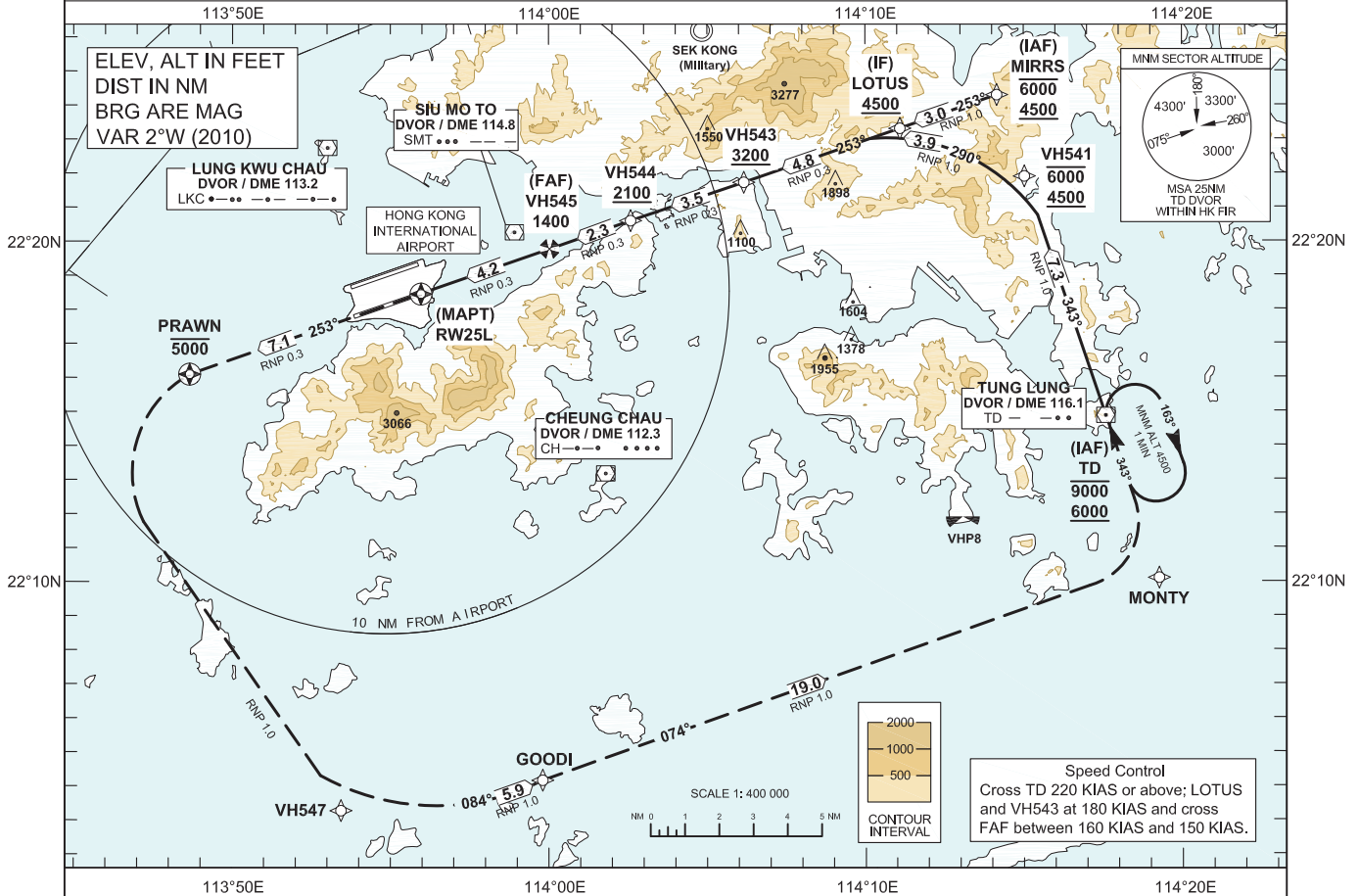


INSTRUMENT APPROACH	AERODROME ELEV 28 FT (HEIGHTS RELATED TO THR RWY 25L - ELEV 27 FT)	HONG KONG APPROACH 119.1 HONG KONG DIRECTOR 119.5 HONG KONG TOWER SOUTH 118.4	HONG KONG / Intl (VHHH) RNAV (RNP) y RWY 25L
CHART - ICAO	MIN TEMP 0°C		

Authorization from HONG KONG CAD is Required (AIC 14/13 refers)

- NOTE 1 RNP AR APCH: RNP 0.3 in Intermediate, Final and Missed Approach Segment, RNP 1.0 in Initial Segment. RNP values are depicted on Plan View for each applicable leg.
- NOTE 2 Aircraft must obtain approval from Hong Kong Civil Aviation Department for RNP AR APCH. Carriage of certified GNSS receiver is mandatory.
- NOTE 3 Do not accept radar vectors inside LOTUS.

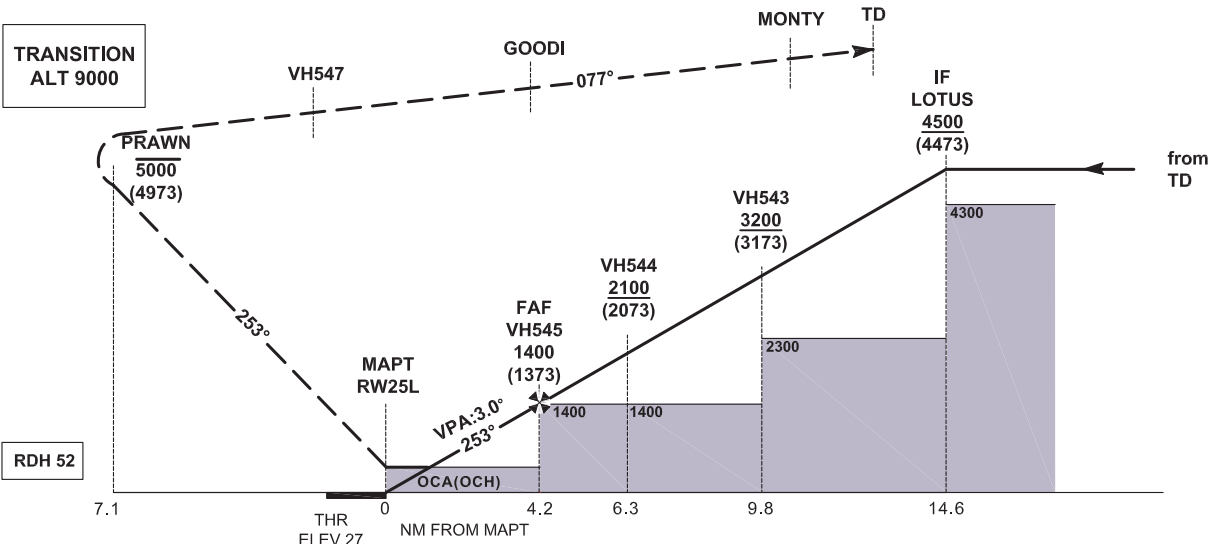


MISSED APPROACH

Climb to 5,000 ft, track to **PRAWN**, then turn left track direct to VH547, then turn left to GOODI, then turn left to MONTY, then TD or as directed by ATC.

- NOTE 1 Climb gradient of 2.5% is required. (152 ft / NM)
- NOTE 2 Speed restriction of 185 KIAS is required until established on track to VH547.

RW25L - PRAWN [A5000-,L] - VH547 [K185,L] - GOODI [L] - MONTY [L] - TD



OCA (OCH)	System	A	B	C	D
RNP 0.3	GNSS	420 (400)	420 (400)	420 (400)	420 (400)

DIST THR (NM)	2	3	4	5
ALT (HGT) (FT)	710 (683)	1030 (1003)	1350 (1323)	1670 (1643)

CHANGE: Chart NOTE 1, depiction of RNP values. MAP abbreviated description.

RNAV_(RNP) y RWY25L via TD
Coding Table

Serial Number	Fix	Path Descriptor	Waypoint Identifier	Flyover	Course °M	Magnetic Variation	Turn Direction	Altitude (ft)	Speed (kts)	VPA	Navigation Specification
01	IAF	IF	TD			+2.0		-9000 +6000	+220		RNP AR APCH
02		TF	VH541		343	+2.0	L	-6000 +4500			RNP AR APCH
03	IF	TF	LOTUS			+2.0	L	+4500	180		RNP AR APCH
04		TF	VH543		253	+2.0		+3200	180		RNP AR APCH
05		TF	VH544		253	+2.0		+2100			RNP AR APCH
06	FAF	TF	VH545		253	+2.0		1400	-160 +150		RNP AR APCH
07	MAPT	TF	RW25L	Y	253	+2.0				-3.0	RNP AR APCH
08		TF	PRAWN	Y	253	+2.0	L	-5000			RNP AR APCH
09		DF	VH547			+2.0	L		185		RNP AR APCH
10		TF	GOODI		084	+2.0	L				RNP AR APCH
11		TF	MONTY		074	+2.0	L				RNP AR APCH
12		TF	TD			+2.0					RNP AR APCH

RNAV_(RNP) y RWY25L via MIRRS
Coding Table

Serial Number	Fix	Path Descriptor	Waypoint Identifier	Flyover	Course °M	Magnetic Variation	Turn Direction	Altitude (ft)	Speed (kts)	VPA	Navigation Specification
01	IAF	IF	MIRRS			+2.0		-6000 +4500			RNP AR APCH
02	IF	TF	LOTUS		253	+2.0		+4500	180		RNP AR APCH
03		TF	VH543		253	+2.0		+3200	180		RNP AR APCH
04		TF	VH544		253	+2.0		+2100			RNP AR APCH
05	FAF	TF	VH545		253	+2.0		1400	-160 +150		RNP AR APCH
06	MAPT	TF	RW25L	Y	253	+2.0				-3.0	RNP AR APCH
07		TF	PRAWN	Y	253	+2.0	L	-5000			RNP AR APCH
08		DF	VH547			+2.0	L		185		RNP AR APCH
09		TF	GOODI		084	+2.0	L				RNP AR APCH
10		TF	MONTY		074	+2.0	L				RNP AR APCH
11		TF	TD			+2.0					RNP AR APCH

Waypoint Coordinates

Waypoint	WGS84 Coordinates
MIRRS (IAF)	22 24 17.10 N 114 14 09.30 E
TD (IAF)	22 14 52.42 N 114 17 35.30 E
VH541	22 21 53.98 N 114 15 01.56 E
LOTUS (IF)	22 23 18.26 N 114 11 05.60 E
VH543	22 21 43.43 N 114 06 09.82 E
VH544	22 20 34.67 N 114 02 35.68 E
VH545 (FAF)	22 19 49.44 N 114 00 15.00 E
RW25L (MAPT)	22 18 26.75 N 113 55 58.16 E
PRAWN	22 16 05.40 N 113 48 40.10 E
VH547	22 03 16.39 N 113 53 26.74 E
GOODI	22 04 09.88 N 113 59 48.59 E
MONTY	22 10 06.26 N 114 19 15.68 E