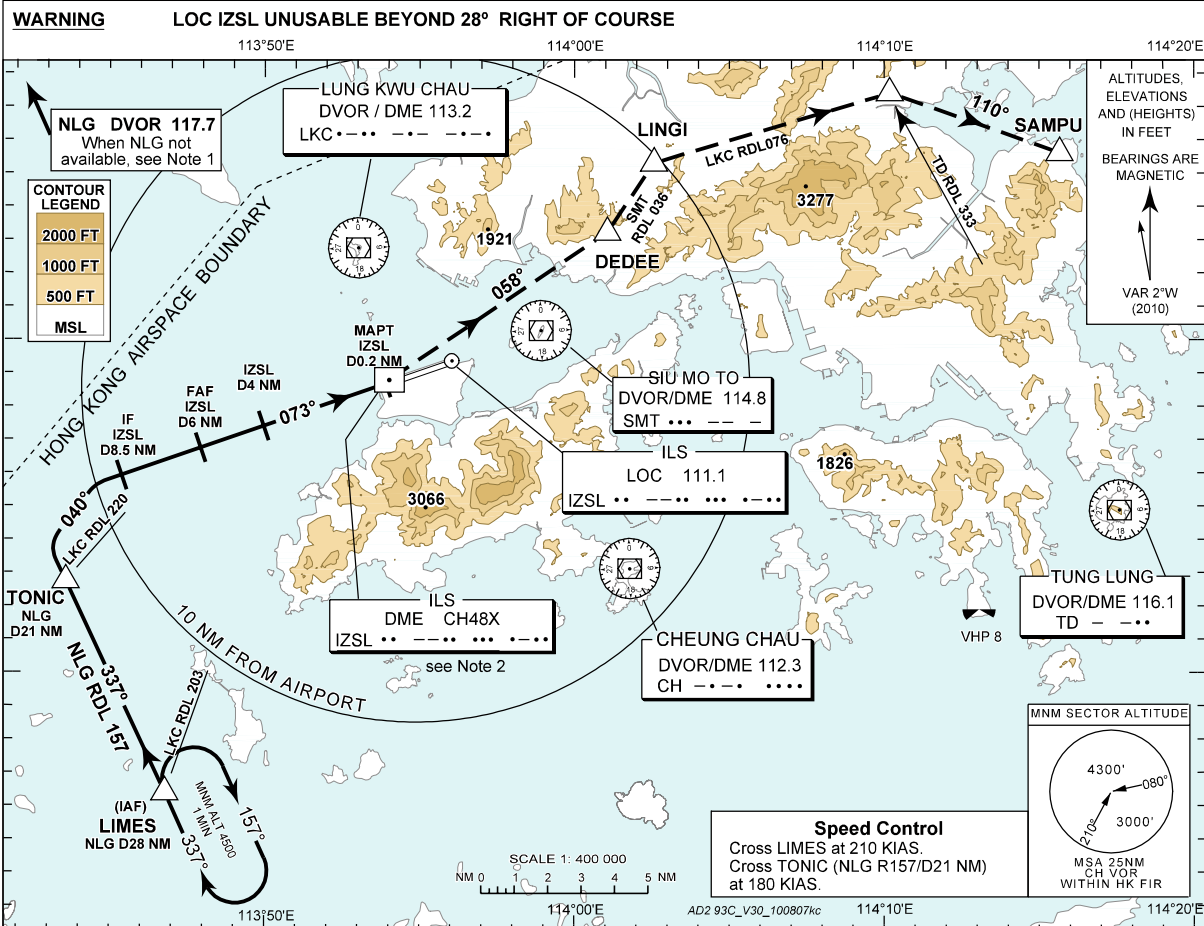
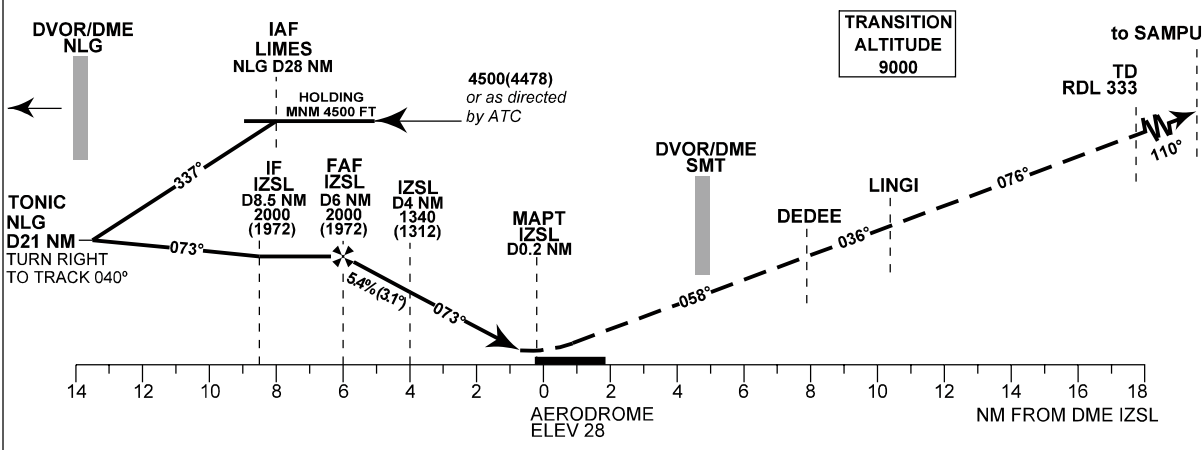


AIP HONG KONG

<b>INSTRUMENT APPROACH CHART - ICAO</b>	AERODROME ELEV 28 FT (HEIGHTS RELATED TO AD ELEV)	HONG KONG TOWER NORTH 118.2 HONG KONG APPROACH 119.1 HONG KONG DIRECTOR 119.5	<b>HONG KONG / Intl (VHHH) LOC RWY 07L</b>
---	--	---	--



Recommended Profile	DME IZSL	6	5	4	3	2
Gradient 5.4% Descent Rate 330 ft/NM	ALT (HGT)	2000 (1972)	1670 (1642)	1340 (1312)	1010 (982)	680 (652)



**NOTE 1 IF NLG DVOR NOT AVBL**  
At LIMES track 337°M. After crossing LKC DVOR RDL 203 descend to 2,000 ft. Crossing LKC DVOR RDL 220 turn right to track 040°M to intercept LOC and maintain 2,000 ft until IZSL DME 6 NM.

**NOTE 2** DME is required.

<b>GS KT</b>	160	140	120	100	80
<b>FAF-MAPT 5.8 NM</b>	2:10 sec	2:29 sec	2:54 sec	3:29 sec	4:21 sec
<b>FT Per MINUTE</b>	880	770	660	550	440

<b>AIRCRAFT CATEGORIES</b>	<b>G/P INOP * OCA (OCH)</b>	<b>VISUAL CIRCLING</b>
A, B, C, D	430 ft (400 ft)	NOT AVAILABLE

\* This procedure requires a missed approach climb gradient of 5.7% (347 ft/NM).  
For aircraft which can only achieve a 2.5% (152 ft/NM) climb gradient, the OCA (OCH) is 1,870 ft (1,840 ft).

**MISSED APPROACH**  
Straight ahead, climb to 5000ft. At RWY07L THR (IZSL DME0.2) turn left on track 058M, and intercept SMT 036R to LINGI then turn right on LKC 076R outbound. Crossing TD333R, track 110M to SAMPU and expect radar vector.

**NOTE 3** NO Turn before RWY07L THR (IZSL DME0.2NM).  
**NOTE 4** Climb gradient of 5.7% is required.  
**NOTE 5** Speed restriction of 230KIAS is required.  
**NOTE 6** When SMT DVOR is not available, the missed approach point is at the landing threshold (IZSL D0.2 NM). Climb to 5000', then at MAP point, turn left on track 058M and expect radar vectors.

**RWY 07L LOC APPROACH**

**Navigation Aids**

Navaid/Ident	Frequency	Co-ordinates	Remarks
Localizer/IZSL	111.1 MHz	22 19 21.08 N 113 56 02.35 E	Course 073°
DME/IZSL	CH 48X	22 18 46.29 N 113 54 01.55 E	
CH DVOR	112.3 MHz	22 13 10.35 N 114 01 48.20 E	Co-located
CH DME	CH 70X		
LKC DVOR	113.2 MHz	22 22 44.12 N 113 53 01.50 E	Co-located
LKC DME	CH 79X		
NLG DVOR	117.7 MHz	22 31 54 N 113 33 48 E	Co-located
NLG DME	CH 124X		
SMT DVOR	114.8 MHz	22 20 15.43 N 113 58 55.46 E	Co-located
SMT DME	CH 95X		
TD DVOR	116.1 MHz	22 14 52.42 N 114 17 35.30 E	Co-located
TD DME	CH 108X		

**Significant Points**

Significant Point	Co-ordinates	Cross Reference from Navaid
LIMES	22 06 25.60 N 113 46 32.60 E	NLG RDL 157/DME 28.0 NM or CH RDL 247/DME 15.7 NM
TONIC	22 12 47.88 N 113 43 21.85 E	NLG RDL 157/DME 21.0 NM
IF		IZSL DME 8.5 NM
FAF		IZSL DME 6.0 NM
MAPT		IZSL DME 0.2 NM
DEDEE	22 23 12.70 N 114 01 03.67 E	SMT RDL 036/DME 3.5 NM
LINGI	22 25 17.63 N 114 02 34.10 E	SMT RDL 036/DME 6.0 NM
SAMPU	22 25 39.19 N 114 15 40.91 E	TD RDL 353/DME 10.9 NM