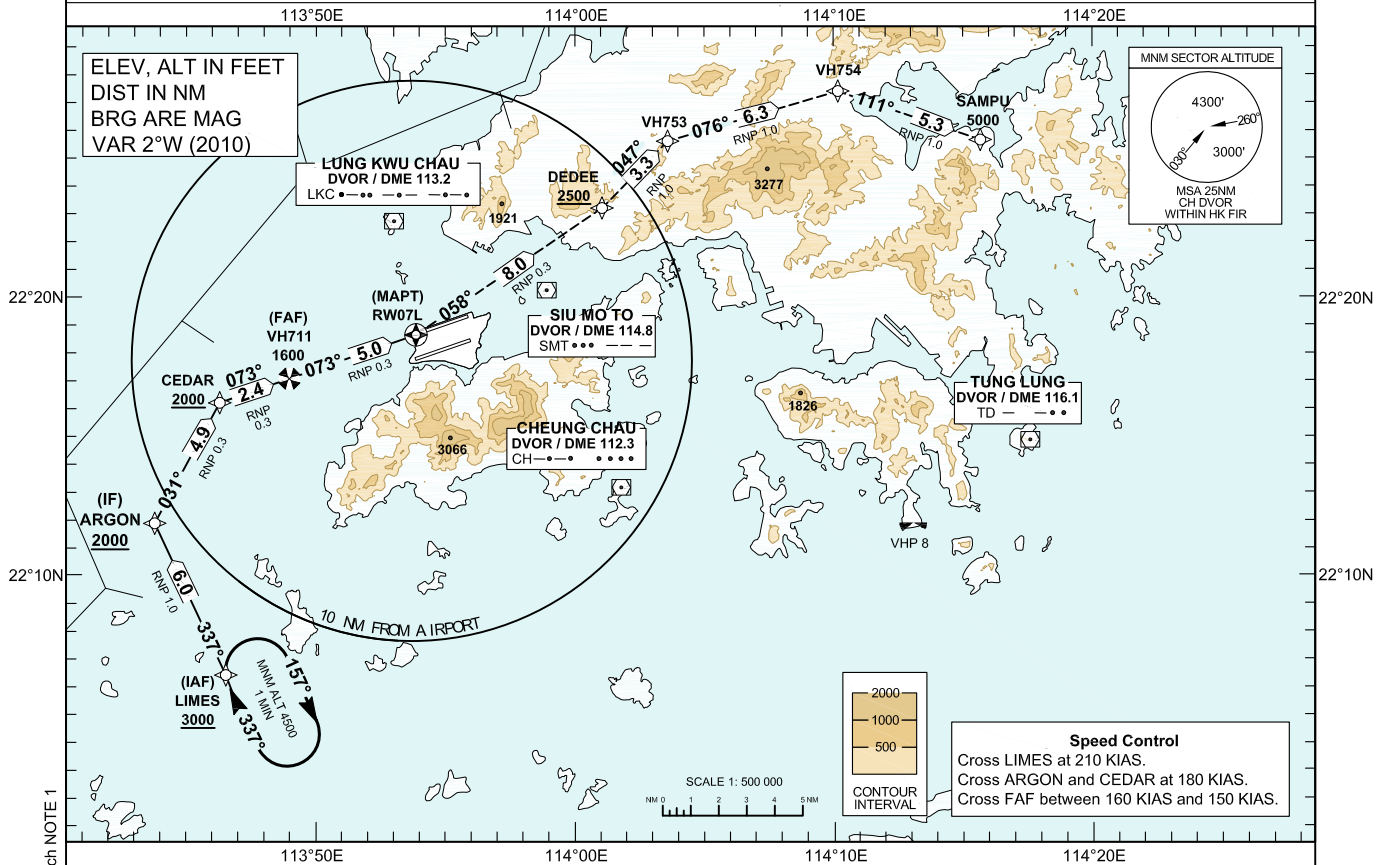


AIP HONG KONG

INSTRUMENT APPROACH CHART - ICAO	AERODROME ELEV 28 FT (HEIGHTS RELATED TO THR RWY 07L - ELEV 22 FT) MIN TEMP 0°C	HONG KONG TOWER NORTH 118.2 HONG KONG APPROACH 119.1 HONG KONG DIRECTOR 119.5	HONG KONG / Intl (VHHH) RNAV (RNP) RWY 07L
---	---	---	---

Authorization from HONG KONG CAD IS Required (AIC 14/13 refers)

- NOTE 1 RNP AR APCH: RNP 0.3 in Intermediate, Final and Missed Approach Segment, RNP 1.0 in Initial Segment. RNP values are depicted on Plan View for each applicable leg.
- NOTE 2 Aircraft must obtain approval from Hong Kong Civil Aviation Department for RNP AR APCH. Carriage of certified GNSS receiver is mandatory.
- NOTE 3 Do not accept radar vectors inside VH711.

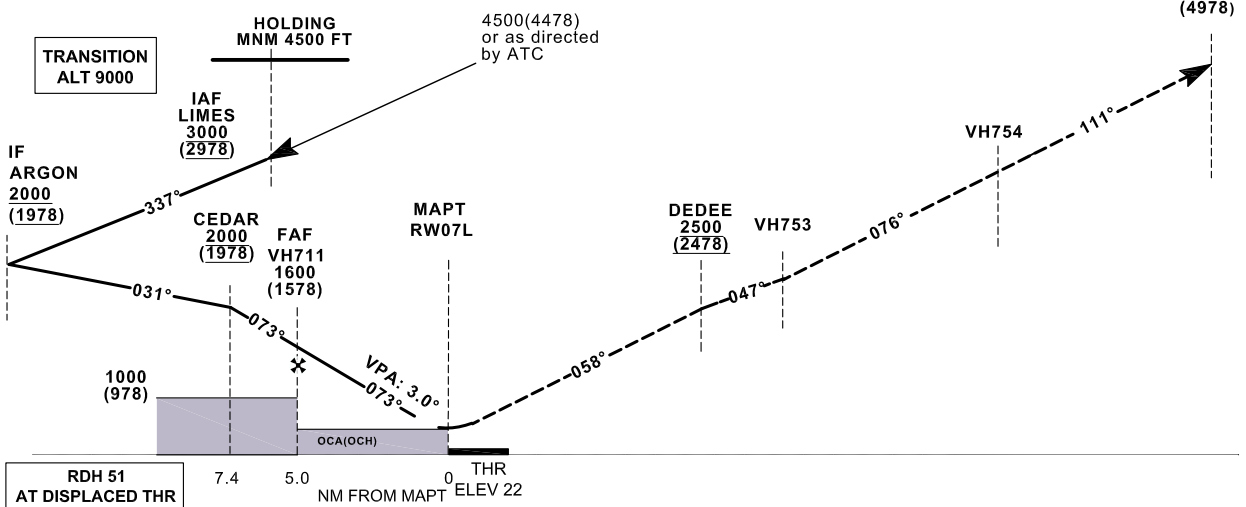


MISSED APPROACH

Climb to 5 000 ft. From **RW07L** track to DEEDEE, and cross DEEDEE at or above 2 500 ft. Then to VH753, then to VH754.

- NOTE 1 Climb gradient of 5.7% (347ft / NM) until above 4 500 ft is required.
- NOTE 2 Speed restriction of 230 KIAS is required.

RW07L [L] - DEEDEE [A2500+] - VH753 - VH754 - SAMPU [A5000]



CHANGE: RDH value, RNP value (ARGON, DEEDEE), ALT(ARGON, SAMPU), speed control, Chart NOTE 1 and Missed Approach NOTE 1

OCA (OCH)	System	A	B	C	D
RNP 0.3	GNSS	420 (400)	420 (400)	420 (400)	420 (400)

DIST THR (NM)	4	3	2
ALT (HGT) (FT)	1350 (1328)	1030 (1008)	710 (688)

RNAV_(RNP) RWY07L Approach

Coding Table

Fix	Path Terminator	Waypoint Name	Fly-over	Course (°M)	Turn Dir	Altitude (FT)	Speed (IAS)	VPA (°)	Navigation Specification
IAF	IF	LIMES	-	-	-	+3000	210	-	RNP AR APCH
IF	TF	ARGON	-	337	-	+2000	180	-	RNP AR APCH
	TF	CEDAR	-	031	-	+2000	180	-	RNP AR APCH
FAF	TF	VH711	-	073	-	1600	-160 +150	-3.00	RNP AR APCH
MAPT	TF	RW07L	Y	073	L	-	-	-	RNP AR APCH
	TF	DEDEE	-	058	-	+2500	230	-	RNP AR APCH
	TF	VH753	-	047	-	-	230	-	RNP AR APCH
	TF	VH754	-	076	-	-	230	-	RNP AR APCH
	TF	SAMPU	-	111	-	5000	230	-	RNP AR APCH

Waypoint Coordinates

Waypoint	WGS84 Coordinates
LIMES (IAF)	22 06 25.60 N 113 46 32.60 E
ARGON (IF)	22 11 52.56 N 113 43 47.67 E
CEDAR	22 16 12.55 N 113 46 18.12 E
VH711 (FAF)	22 17 04.63 N 113 48 59.26 E
RW07L (MAPT)	22 18 39.30 N 113 53 52.68 E
DEDEE	22 23 12.70 N 114 01 03.67 E
VH753	22 25 36.92 N 114 03 36.03 E
VH754	22 27 24.31 N 114 10 10.70 E
SAMPU	22 25 39.19 N 114 15 40.91 E