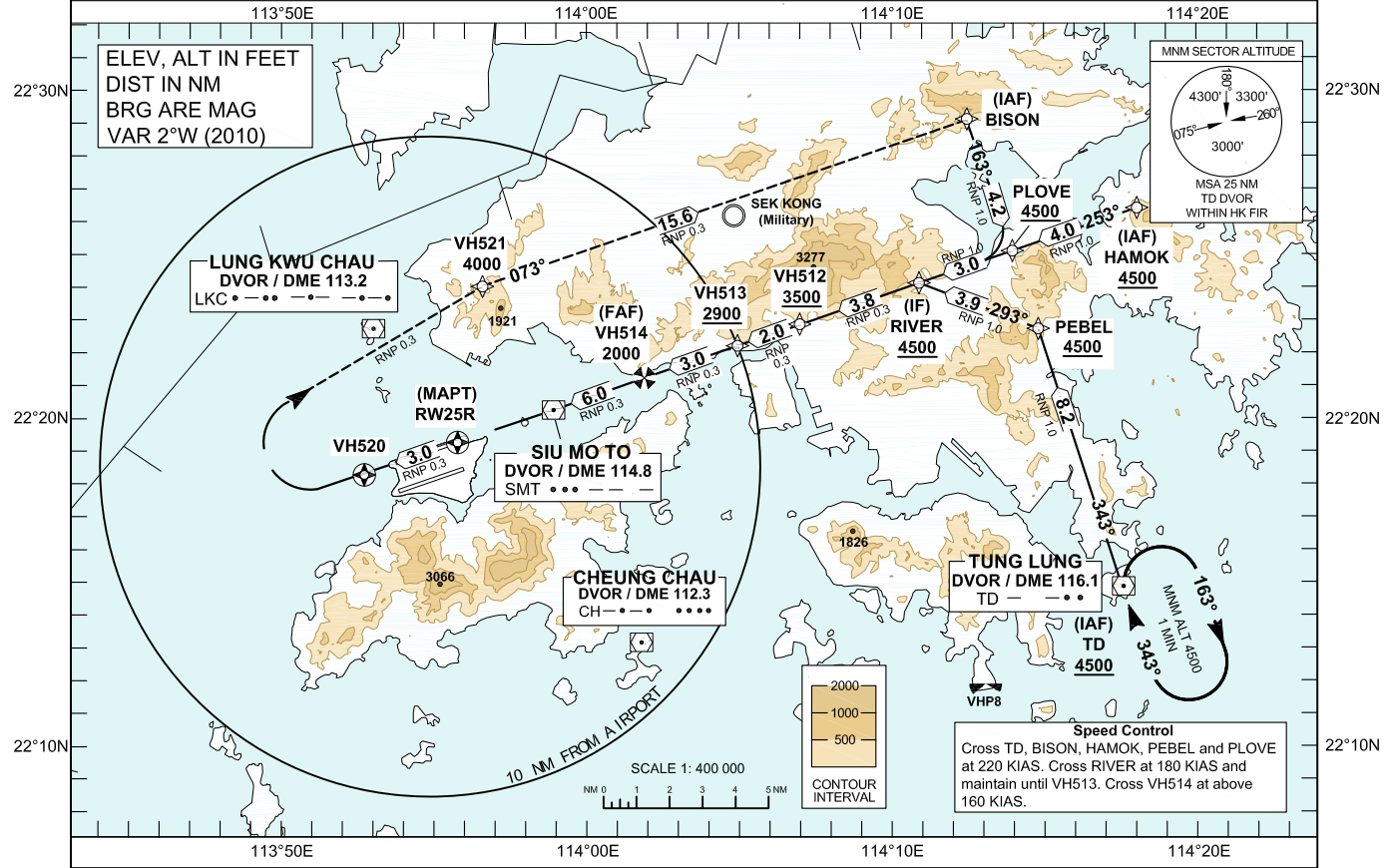


AIP HONG KONG

<b>INSTRUMENT APPROACH CHART - ICAO</b>	AERODROME ELEV 28 FT (HEIGHTS RELATED TO THR RWY 25R - ELEV 22 FT) MIN TEMP 0° C	HONG KONG TOWER NORTH 118.2 HONG KONG APPROACH 119.1 HONG KONG DIRECTOR 119.5	<b>VHHH / HONG KONG INTL RNAV (RNP) Z RWY 25R</b>
---	--	---	---

**Authorization from HONG KONG CAD is Required (AIC 14/13 refers)**

- NOTE 1 RNP AR APCH: RNP 0.3 in Intermediate, Final and Missed Approach Segment, RNP 1.0 in Initial Segment. RNP values are depicted on Plan View for each applicable leg.
- NOTE 2 Aircraft must obtain approval from Hong Kong Civil Aviation Department for RNP AR APCH. Carriage of certified GNSS receiver is mandatory.
- NOTE 3 DO NOT accept radar vectors inside RIVER.

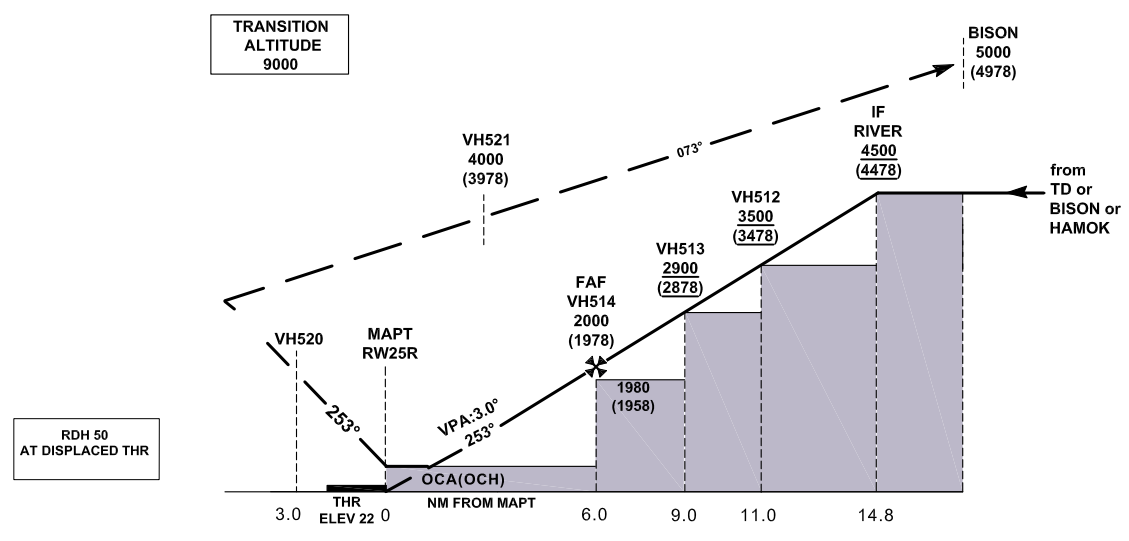


**MISSED APPROACH**

Climb initially to 4 000 ft. From RW25R track to VH520, then turn right direct to VH521 and cross VH521 at 4 000 ft. From VH521 climb to 5 000 ft and track to BISON.

- NOTE 1 Climb gradient of 5.0% (304 ft / NM) is required until reaching 4 000 ft.
- NOTE 2 A speed restriction of 185 KIAS is required until VH521, then 220 KIAS until BISON.

**RW25R - VH520 [R] > VH521 [A4000] - BISON [A5000]**



CHANGE: Procedure name, RNP value (BISON, RIVER, TD), ALT (HAMOK, PEABEL, PLOVE, TD), speed control, Chart. NOTE 1 and Missed Approach NOTE 1

<b>OCA (OCH)</b>	<b>System</b>	<b>A</b>	<b>B</b>	<b>C</b>	<b>D</b>	<b>DIST THR (NM)</b>	<b>2</b>	<b>3</b>	<b>4</b>	<b>5</b>
RNP 0.3	GNSS	420 (400)	420 (400)	420 (400)	420 (400)	ALT (HGT) (FT)	710 (688)	1030 (1008)	1350 (1328)	1660 (1638)

**RNAV<sub>(RNP)</sub> z RWY25R Approach**

**Coding Table**

Fix	Path Terminator	Waypoint Name	Fly-over	Course (°M)	Turn Dir	Altitude (FT)	Speed (KIAS)	Recommended NAVaid	Dist from NAVaid (NM)	Bearing from NAVaid	VPA (°)	Navigation Specification
IAF	IF	TD	-	-	-	+4500	220		-	-	-	RNP AR APCH
	TF	PEBEL	-	343	-	+4500	220		-	-	-	RNP AR APCH
	TF	RIVER	-	293	-	+4500	180		-	-	-	RNP AR APCH
IAF	IF	BISON	-	-	-	+4500	220		-	-	-	RNP AR APCH
	TF	PLOVE	-	163	-	+4500	220		-	-	-	RNP AR APCH
	TF	RIVER	-	253	-	+4500	180		-	-	-	RNP AR APCH
IAF	IF	HAMOK	-	-	-	+4500	220		-	-	-	RNP AR APCH
	TF	PLOVE	-	253	-	+4500	220		-	-	-	RNP AR APCH
	TF	RIVER	-	253	-	+4500	180		-	-	-	RNP AR APCH
IF	TF	RIVER	-	-	-	+4500	180		-	-	-	RNP AR APCH
	TF	VH512	-	253	-	+3500	180		-	-	-	RNP AR APCH
	TF	VH513	-	253	-	+2900	180		-	-	-	RNP AR APCH
FAF	TF	VH514	-	253	-	2000	+160		-	-	-3.00	RNP AR APCH
MAPT	TF	<b>RW25R</b>	Y	253	-	-	-		-	-	-	RNP AR APCH
	CF	<b>VH520</b>	Y	253	R	-	185	SMT DVOR/DME	6.1	253°M	-	RNP AR APCH
	DF	VH521	-	-	-	4000	185		-	-	-	RNP AR APCH
	TF	BISON	-	073	-	5000	220		-	-	-	RNP AR APCH

**Waypoint Coordinates**

Waypoint Name	WGS84 Coordinates
TD (IAF)	22 14 52.42 N 114 17 35.30 E
PEBEL	22 22 43.93 N 114 14 48.38 E
HAMOK (IAF)	22 26 24.62 N 114 18 02.86 E
PLOVE	22 25 06.30 N 114 13 57.90 E
BISON (IAF)	22 29 07.41 N 114 12 28.76 E
RIVER (IF)	22 24 07.55 N 114 10 54.23 E
VH512	22 22 52.32 N 114 06 59.63 E
VH513	22 22 13.05 N 114 04 57.24 E
VH514 (FAF)	22 21 14.10 N 114 01 53.68 E
<b>RW25R (MAPT)</b>	22 19 16.04 N 113 55 46.70 E
<b>VH520</b>	22 18 16.92 N 113 52 43.28 E
VH521	22 24 01.66 N 113 56 35.63 E