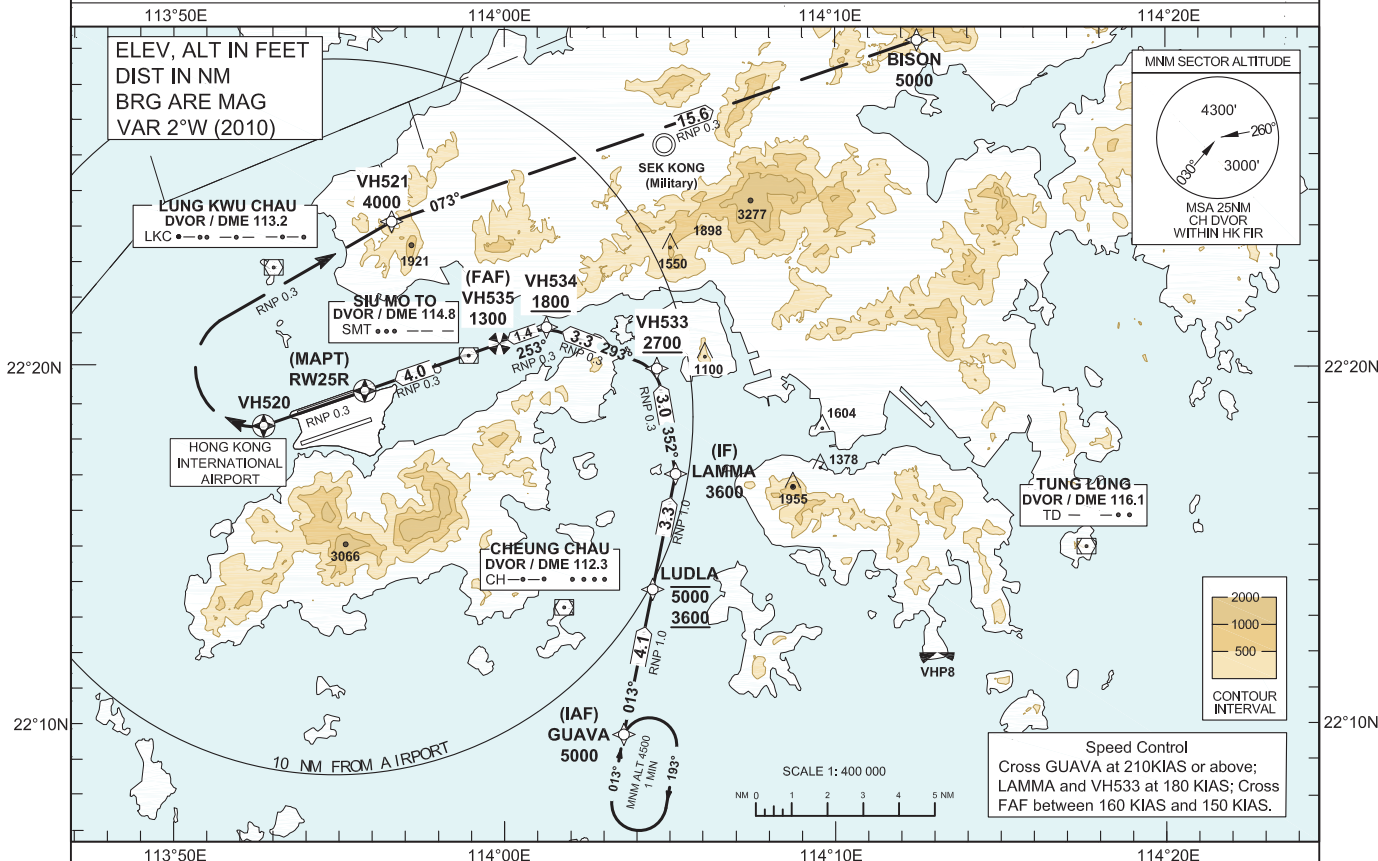


INSTRUMENT APPROACH CHART - ICAO	AERODROME ELEV 28 FT (HEIGHTS RELATED TO THR RWY 25R - ELEV 22 FT) MIN TEMP 0°C	HONG KONG APPROACH 119.1 HONG KONG DIRECTOR 119.5 HONG KONG TOWER NORTH 118.2	HONG KONG / Intl (VHHH) RNAV (RNP) x RWY 25R
---	---	---	---

Authorization from HONG KONG CAD is Required (AIC 14/13 refers)

- NOTE 1 RNP AR APCH: RNP 0.3 in Intermediate, Final and Missed Approach Segment, RNP 1.0 in Initial Segment. RNP values are depicted on Plan View for each applicable leg.
- NOTE 2 Aircraft must obtain approval from Hong Kong Civil Aviation Department for RNP AR APCH. Carriage of certified GNSS receiver is mandatory.
- NOTE 3 Do not accept radar vectors inside GUAVA.

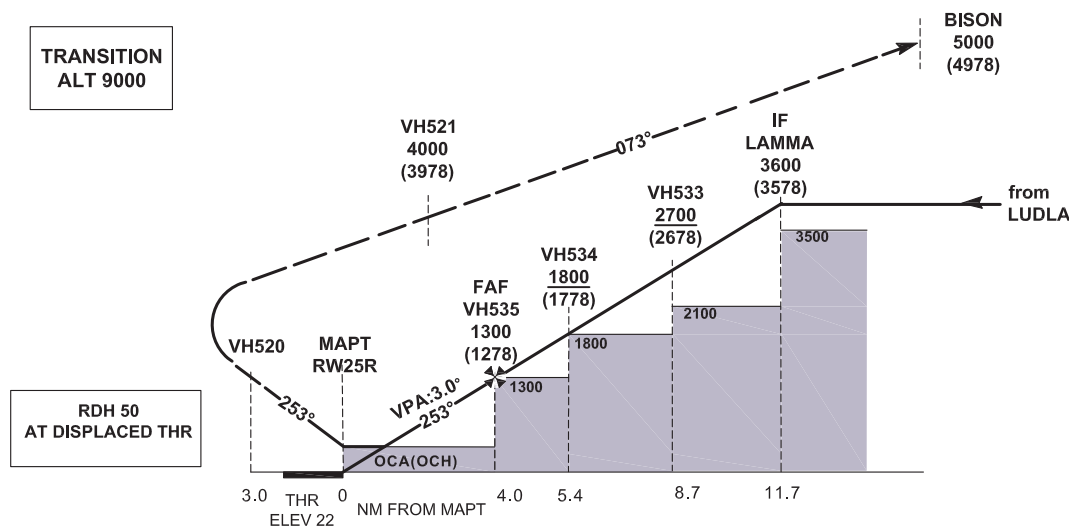


MISSED APPROACH

Climb initially to 4 000 ft. From **RW25R** track to **VH520**, then turn right direct to **VH521** and cross **VH521** at 4 000 ft. From **VH521** climb to 5 000 ft and track to **BISON**.

- NOTE 1 Climb gradient of 5.0% (304ft / NM) is required until reaching 4 000 ft.
- NOTE 2 Speed restriction of 185 KIAS is required until **VH521**, then 220 KIAS until **BISON**.

RW25R - VH520 [R] - VH521 [A4000,K185,R] - BISON [A5000,K220]



CHANGE: Chart NOTE 1, depiction of RNP values, MAP abbreviated description.

OCA (OCH)	System	A	B	C	D
RNP 0.3	GNSS	420 (400)	420 (400)	420 (400)	420 (400)

DIST THR (NM)	2	3	4	5
ALT (HGT) (FT)	710 (688)	1030 (1008)	1350 (1328)	1660 (1638)

RNAV_(RNP) X RWY25R

Coding Table

Serial Number	Fix	Path Descriptor	Waypoint Identifier	Flyover	Course °M	Magnetic Variation	Turn Direction	Altitude (ft)	Speed (kts)	Recommended Navaid	VPA	Navigation Specification
01	IAF	IF	GUAVA			+2.0		5000	+210			RNP AR APCH
02		TF	LUDLA		013	+2.0		-5000 +3600				RNP AR APCH
03	IF	TF	LAMMA		013	+2.0	L	3600	180			RNP AR APCH
04		TF	VH533		352	+2.0	L	+2700	180			RNP AR APCH
05		TF	VH534		293	+2.0	L	+1800				RNP AR APCH
06	FAF	TF	VH535		253	+2.0		1300	-160 +150			RNP AR APCH
07	MAPT	TF	RW25R	Y	253	+2.0					-3.0	RNP AR APCH
08		CF	VH520	Y	253	+2.0	R			SMT DVOR/DME Distance from SMT: 6.1 NM Bearing from SMT: 253°M		RNP AR APCH
09		DF	VH521			+2.0	R	4000	185			RNP AR APCH
10		TF	BISON		073	+2.0		5000	220			RNP AR APCH

Waypoint Coordinates

Waypoint	WGS84 Coordinates	
GUAVA (IAF)	22 09 36.10 N	114 03 36.30 E
LUDLA	22 13 40.79 N	114 04 28.75 E
LAMMA (IF)	22 16 55.61 N	114 05 10.55 E
VH533	22 19 53.47 N	114 04 36.72 E
VH534	22 21 03.43 N	114 01 16.62 E
VH535 (FAF)	22 20 35.60 N	113 59 51.03 E
RW25R (MAPT)	22 19 16.04 N	113 55 46.70 E
VH520	22 18 16.92 N	113 52 43.28 E
VH521	22 24 01.66 N	113 56 35.63 E
BISON	22 29 07.41 N	114 12 28.76 E