

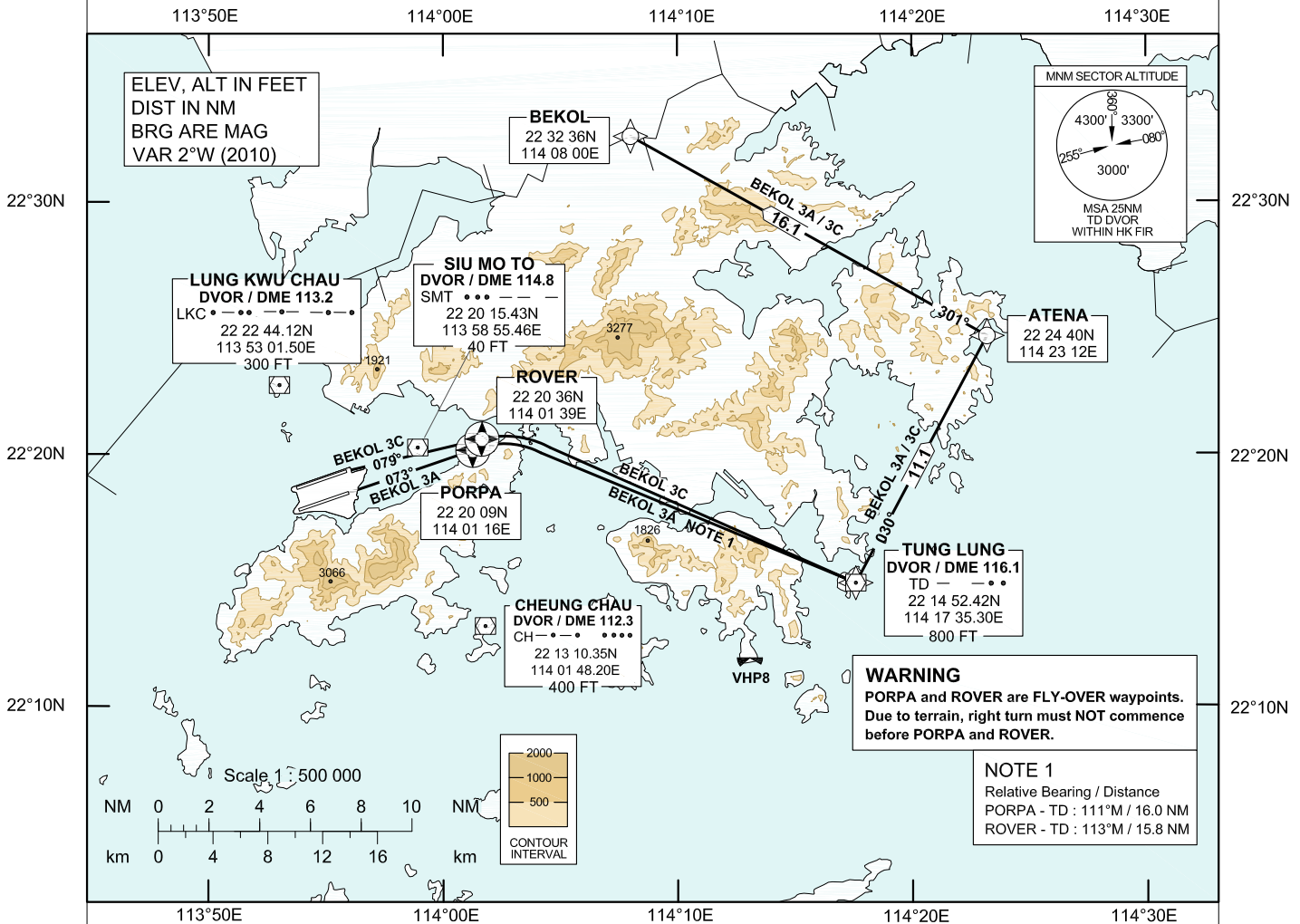
AIP HONG KONG

STANDARD DEPARTURE CHART-
INSTRUMENT (SID) - ICAO

Transition Altitude 9 000 ft
DEP 123.8

HONG KONG / Intl (VHHH)
RNAV (GNSS) BEKOL 3A SID RWY 07R
RNAV (GNSS) BEKOL 3C SID RWY 07L

1. For RNAV (GNSS) SID aircraft must be approved by State of Registry in accordance with ICAO Basic RNP1 standard or equivalent (see GEN1.5-2, para 3.5.2). Carriage of certified GNSS receiver is mandatory.
2. Aircraft that do not have approval or whose Basic RNP1 capability has been degraded before departure shall use the Conventional Departure Procedure described below.
3. PORPA and ROVER are **FLY-OVER** waypoints. All other waypoints are fly-by.
4. (DER) - Departure End of Runway.



BEKOL 3A SID RWY 07R

Basic RNP1 Procedure
(Mandate procedure available to aircraft appropriately equipped and approved)
PORPA[K220;-R] - TD[L] - ATENA[L] - BEKOL

Conventional Procedure
(Procedure will be removed after 10 JULY 2013)
Track 073°M to PORPA (ISR DME 7.0 NM, or crossing LKC DVOR RDL 111). At PORPA turn right to intercept TD DVOR RDL 296 to TD DVOR. From TD DVOR turn left direct to ATENA then turn left direct to BEKOL. After BEKOL continue flight plan route.

If TD DVOR is not available, at PORPA turn right to track 116°M, request radar vectors to BEKOL.

CLIMB REQUIREMENT
Initial climb to 5 000 ft. Expect further climb when instructed by ATC. Cross BEKOL at 4 800 m or above.

TERRAIN CLEARANCE
Minimum climb gradient of 4.9% (298 ft/NM) until leaving 1400 ft is required.

SPEED RESTRICTION
Speed restriction of 220 KIAS maximum until established on track to TD DVOR.

BEKOL 3C SID RWY 07L

Basic RNP1 Procedure
(Mandate procedure available to aircraft appropriately equipped and approved)
RWY07L(DER) - ROVER[K220;-R] - TD[L] - ATENA[L] - BEKOL

Conventional Procedure
(Procedure will be removed after 10 JULY 2013)
Track 073°M to SMT DVOR. Depart SMT DVOR on RDL 085 to ROVER (SMT DME 2.6 NM, or crossing LKC DVOR RDL 107). At ROVER turn right to intercept TD DVOR RDL 296 to TD DVOR. From TD DVOR turn left direct to ATENA then turn left direct to BEKOL. After BEKOL continue flight plan route.

If TD DVOR is not available, at ROVER turn right to track 116°M, request radar vectors to BEKOL.

CLIMB REQUIREMENT
Initial climb to 5 000 ft. Expect further climb when instructed by ATC. Cross BEKOL at 4 800 m or above.

TERRAIN CLEARANCE
Minimum climb gradient of 4.1% (250 ft/NM) until leaving 1400 ft is required.

SPEED RESTRICTION
Speed restriction of 220 KIAS maximum until established on track to TD DVOR.

INTENTIONALLY

LEFT

BLANK