

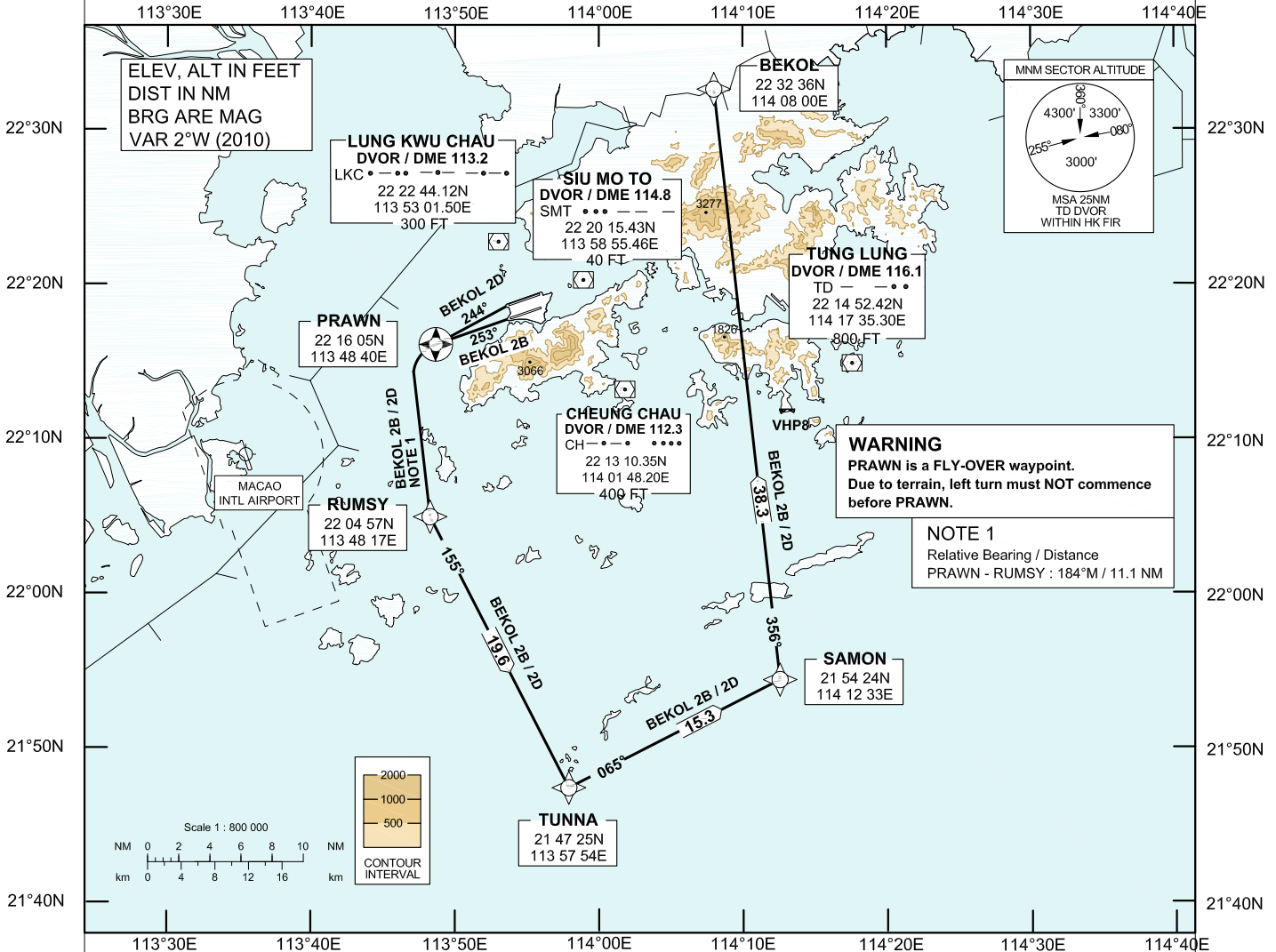
AIP HONG KONG

STANDARD DEPARTURE CHART-
INSTRUMENT (SID) - ICAO

Transition Altitude 9 000 ft
DEP 123.8

HONG KONG / Intl (VHHH)
RNAV (GNSS) BEKOL 2B SID RWY 25L
RNAV (GNSS) BEKOL 2D SID RWY 25R

1. For RNAV (GNSS) SID aircraft must be approved by State of Registry in accordance with ICAO Basic RNP1 standard or equivalent (see GEN1.5-2, para 3.5.2). Carriage of certified GNSS receiver is mandatory.
2. Aircraft that do not have approval or whose Basic RNP1 capability has been degraded before departure shall use the Conventional Departure Procedure described below.
3. PRAWN is a **FLY-OVER** waypoint. All other waypoints are fly-by.
4. (DER) - Departure End of Runway.



BEKOL 2B SID RWY 25L

Basic RNP1 Procedure
(Mandate procedure available to aircraft appropriately equipped and approved)
PRAWN[K230-;L] - RUMSY[L] - TUNNA[L] - SAMON[L] - BEKOL

Conventional Procedure
(Procedure will be removed after 10 JULY 2013)
Track 253°M to PRAWN (IFL DME 7.0 NM, or crossing LKC DVOR RDL 214). At PRAWN turn left track 184°M to intercept NLG DVOR RDL 155 at RUMSY. From RUMSY turn left direct to TUNNA then turn left direct to SAMON then turn left direct to BEKOL. After BEKOL continue flight plan route.

If NLG DVOR is not available, at PRAWN turn left to track 184°M, request radar vectors to TUNNA.

CLIMB REQUIREMENT
Initial climb to 5 000 ft. Expect further climb when instructed by ATC. Cross BEKOL at 4 800 m or above.

TERRAIN CLEARANCE
Minimum climb gradient of 3.3% (201 ft/NM).

SPEED RESTRICTION
Speed restriction of 230 KIAS maximum until established on track to RUMSY.

BEKOL 2D SID RWY 25R

Basic RNP1 Procedure
(Mandate procedure available to aircraft appropriately equipped and approved)
RWY25R(DER) - PRAWN[K230-;L] - RUMSY[L] - TUNNA[L] - SAMON[L] - BEKOL

Conventional Procedure
(Procedure will be removed after 10 JULY 2013)
Track 253°M to ITFR DME 3.0 NM. At ITFR DME 3.0 NM track 242°M to PRAWN (ITFR DME 7.2 NM, or crossing LKC DVOR RDL 214). At PRAWN turn left track 184°M to intercept NLG DVOR RDL 155 at RUMSY. From RUMSY turn left direct to TUNNA then turn left direct to SAMON then turn left direct to BEKOL. After BEKOL continue flight plan route.

If NLG DVOR is not available, at PRAWN turn left to track 184°M, request radar vectors to TUNNA.

CLIMB REQUIREMENT
Initial climb to 5 000 ft. Expect further climb when instructed by ATC. Cross BEKOL at 4 800 m or above.

TERRAIN CLEARANCE
Minimum climb gradient of 3.3% (201 ft/NM).

SPEED RESTRICTION
Speed restriction of 230 KIAS maximum until established on track to RUMSY.

INTENTIONALLY

LEFT

BLANK