

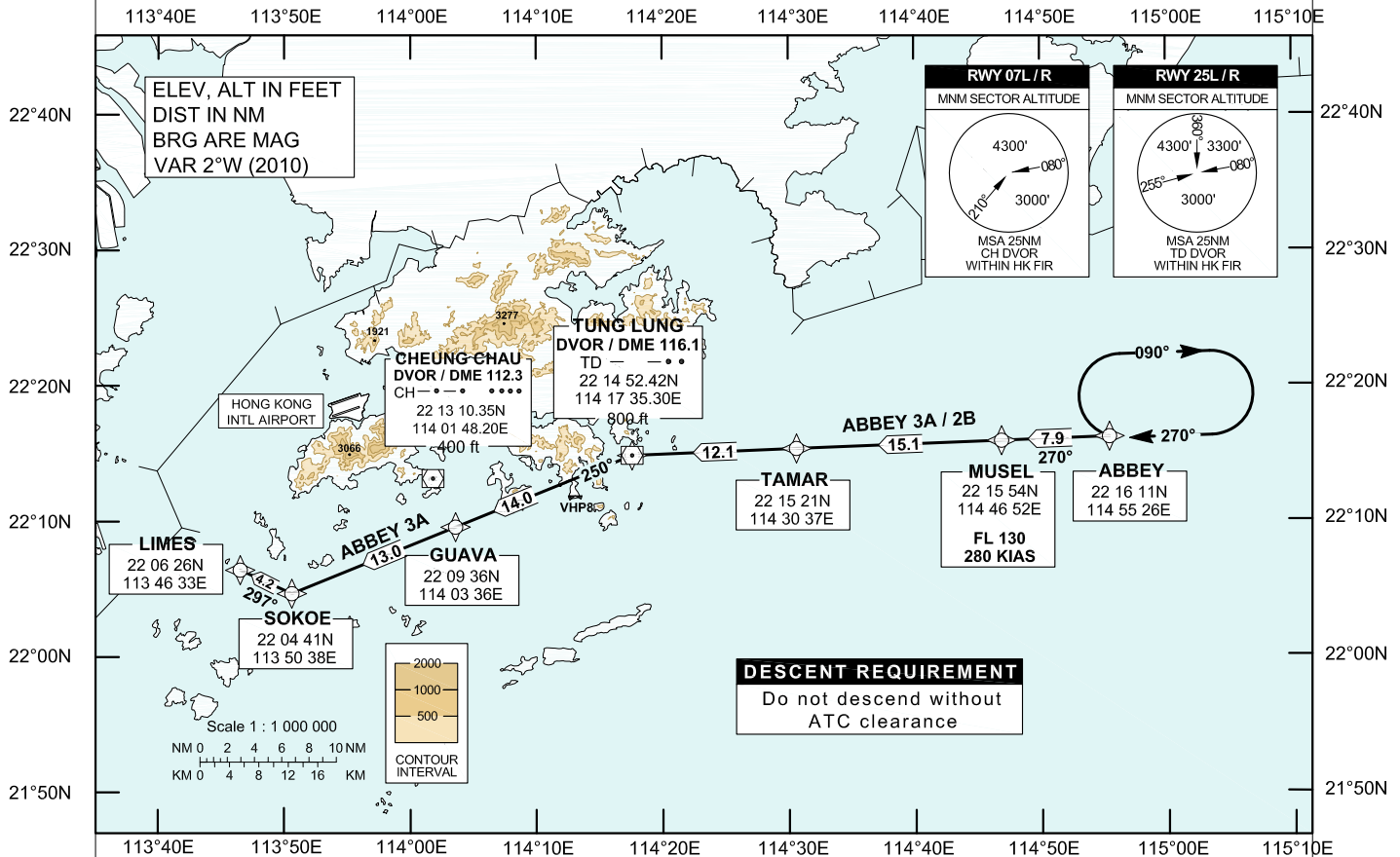
AIP HONG KONG

**STANDARD ARRIVAL CHART-  
INSTRUMENT (STAR) - ICAO**

Transition Altitude 9 000 ft  
HONG KONG RADAR 126.5

**HONG KONG / Intl (VHHH)  
RNAV (GNSS) ABBEY 3A STAR RWY 07L / 07R  
RNAV (GNSS) ABBEY 2B STAR RWY 25L / 25R**

1. For RNAV (GNSS) STAR aircraft must be approved by State of Registry in accordance with ICAO Basic-RNP 1 standard or equivalent (see GEN 1.5 para 3.5.2 on page GEN 1.5-2). Carriage of certified GNSS receiver is mandatory.
2. Conventional Procedure is for exclusive use by airline operators which have been granted prior approval. For application, see VHHH AD 2.22 para 7.1.3 on page AD 2-32.



**ABBEY 3A STAR RWY 07L / RWY 07R**

**Basic-RNP 1 Procedure**  
(Mandate procedure available to aircraft appropriately equipped and approved)  
ABBEY - MUSSEL[F130;K280] - TAMAR - TD[L] - GUAVA - SOKOE[R] - LIMES  
Expect ILS approach. Descend as directed by ATC.

**Conventional Procedure**  
(Use of procedure subject to prior approval, see Note 2.)  
From ABBEY proceed direct to MUSSEL then TAMAR.  
From TAMAR proceed direct to TD DVOR then GUAVA (TD R250 / D14 NM). From GUAVA proceed direct to SOKOE (TD R250 / D27 NM) then LIMES. Expect ILS approach. Descend as directed by ATC.

**IF TD DVOR is not available**  
From MUSSEL proceed direct to TAMAR then reporting point TD. From reporting point TD proceed direct to GUAVA then SOKOE. From SOKOE proceed direct to LIMES. Descend as directed by ATC.

**ABBEY 2B STAR RWY 25L / RWY 25R**

**Basic-RNP 1 Procedure**  
(Mandate procedure available to aircraft appropriately equipped and approved)  
ABBEY - MUSSEL[F130;K280] - TAMAR - TD  
Expect ILS approach. Descend as directed by ATC.

**Conventional Procedure**  
(Use of procedure subject to prior approval, see Note 2.)  
From ABBEY proceed direct to MUSSEL then TAMAR.  
From TAMAR proceed direct to TD DVOR.  
Expect ILS approach. Descend as directed by ATC.

**IF TD DVOR is not available**  
From MUSSEL proceed direct to TAMAR then reporting point TD. Descend as directed by ATC.

**DESCENT REQUIREMENT**  
Cross MUSSEL at F130. **DO NOT DESCEND WITHOUT ATC CLEARANCE.**

**SPEED CONTROL**  
Aircraft shall fly at 280 KIAS by MUSSEL.

**HOLDING**  
The holding pattern for ABBEY STARs is established at ABBEY. If holding is required, each flight will be instructed individually.

**ALTERNATIVE HOLDING**  
In order to provide traffic management flexibility during peak periods of arrival or adverse weather situation in Hong Kong TMA, traffic may be instructed to hold at BETTY or other terminal holding as directed by ATC.

**LOSS OF COMMUNICATION**  
In the event of a loss of communication aircraft shall comply with the descent requirement and the STAR track above.  
Thence:  
For RWY 07L/R, maintain F130 to LIMES. Join LIMES holding pattern and descend to 4 500 ft in the hold, then carry out the appropriate ILS approach procedure.  
For RWY 25L/R, maintain F130 to TD DVOR. Join TD DVOR holding pattern and descend to 4 500 ft in the hold, then carry out the appropriate ILS approach procedure.

**FMC Database Coding Reference for Hong Kong RNAV<sub>(GNSS)</sub> STARs**

**Designator: ABBEY 3A Runway 07L / Runway 07R**

STAR Designator	Sequence Number	Waypoint Name	Path Terminator	Fly-over	Turn Dir	Altitude (FT)	Speed (IAS)	Radius (m)	Center of Turn	Track (°M)	Distance (NM)
ABBEY 3A	01	ABBEY	IF	-	-	-	-	-	-	-	-
	02	MUSEL	TF	-	-	FL130	280	-	-	270	7.9
	03	TAMAR	TF	-	-	-	-	-	-	270	15.1
	04	TD	TF	-	L	-	-	-	-	270	12.1
	05	GUAVA	TF	-	-	-	-	-	-	250	14.0
	06	SOKOE	TF	-	R	-	-	-	-	250	13.0
	07	LIMES	TF	-	-	-	-	-	-	297	4.2

**Designator: ABBEY 2B Runway 25L / Runway 25R**

STAR Designator	Sequence Number	Waypoint Name	Path Terminator	Fly-over	Turn Dir	Altitude (FT)	Speed (IAS)	Radius (m)	Center of Turn	Track (°M)	Distance (NM)
ABBEY 2B	01	ABBEY	IF	-	-	-	-	-	-	-	-
	02	MUSEL	TF	-	-	FL130	280	-	-	270	7.9
	03	TAMAR	TF	-	-	-	-	-	-	270	15.1
	04	TD	TF	-	-	-	-	-	-	270	12.1

**Waypoint Coordinates**

Waypoint Name	Coordinates (WGS84)
ABBEY	22 16 11.00N 114 55 25.92E
MUSEL	22 15 53.99N 114 46 52.13E
TAMAR	22 15 21N 114 30 37E
TD	22 14 52.42N 114 17 35.30E
GUAVA	22 09 36.1N 114 03 36.3E
SOKOE	22 04 41.2N 113 50 38.1E
LIMES	22 06 25.6 N 113 46 32.6E