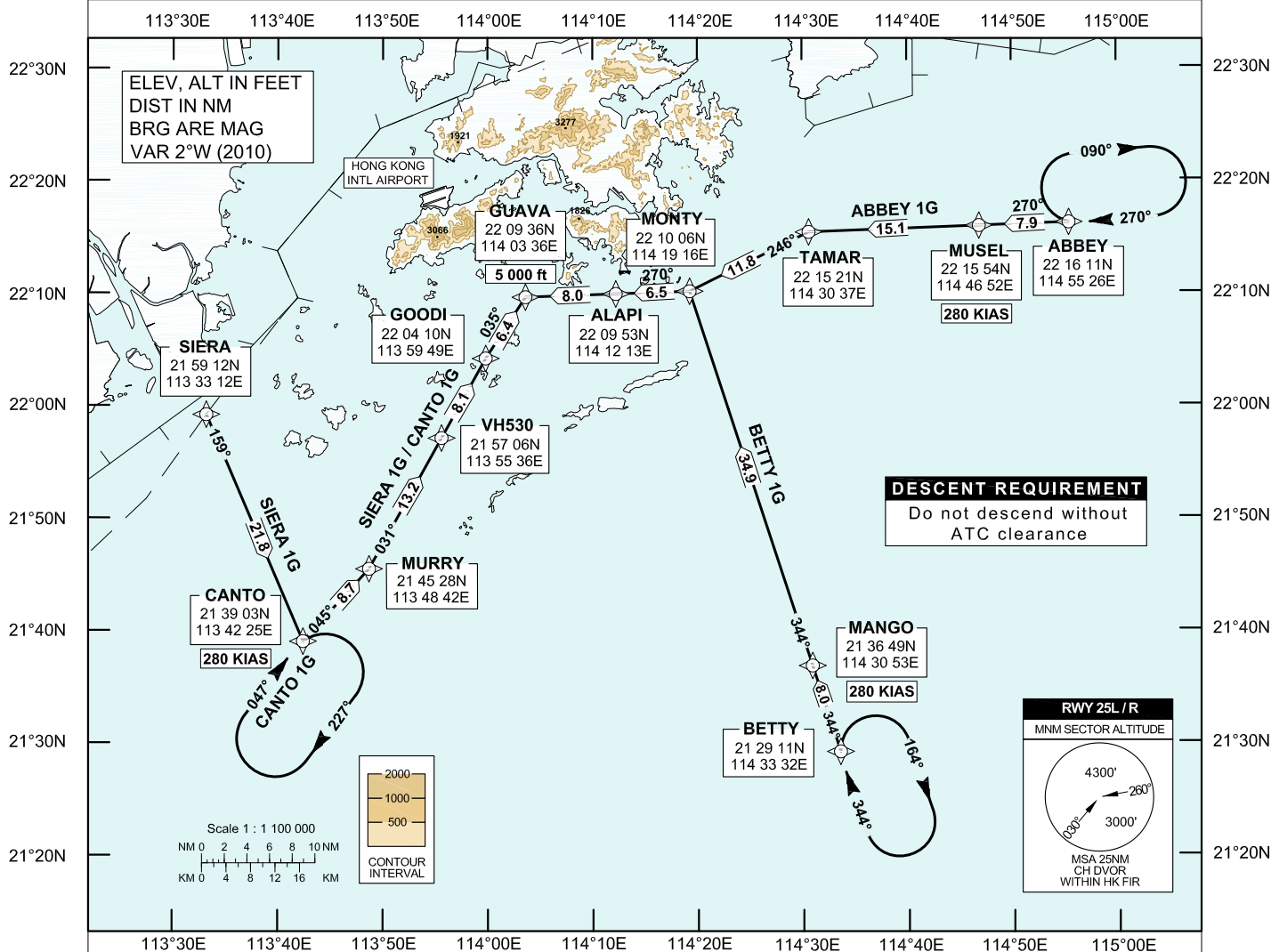


**STANDARD ARRIVAL CHART - INSTRUMENT (STAR) - ICAO**

Transition Altitude 9 000 ft  
 HONG KONG RADAR 126.3 (BETTY 1G)  
 HONG KONG RADAR 126.5 (ABBEY 1G)  
 HONG KONG RADAR 127.55 (CANTO 1G / SIERA 1G)

HONG KONG / Intl (VHHH)  
 RNAV (GNSS) ABBEY 1G / BETTY 1G STAR  
 RNAV (GNSS) CANTO 1G / SIERA 1G STAR  
 RWY 25L / 25R

For RNAV (GNSS) STAR aircraft must be approved by State of Registry in accordance with ICAO Basic-RNP 1 standard or equivalent (see GEN 1.5 para 3.5.2 on page GEN 1.5-2). Carriage of certified GNSS receiver is mandatory.



<p><b>ABBEY 1G STAR RWY 25L / RWY 25R</b></p>	<p><b>BETTY 1G STAR RWY 25L / RWY 25R</b></p>
<p><b>Basic-RNP 1 Procedure</b>                  ABBEY - MUSEL - TAMAR - MONTY - ALAPI - GUAVA[A050]                  Expect RNP AR APCH. Descend as directed by ATC.</p>	<p><b>Basic-RNP 1 Procedure</b>                  BETTY - MANGO - MONTY - ALAPI - GUAVA[A050]                  Expect RNP AR APCH. Descend as directed by ATC.</p>
<p><b>CANTO 1G STAR RWY 25L / RWY 25R</b></p>	<p><b>SIERA 1G STAR RWY 25L / RWY 25R</b></p>
<p><b>Basic-RNP 1 Procedure</b>                  CANTO - MURRY - VH530 - GOODI - GUAVA[A050]                  Expect RNP AR APCH. Descend as directed by ATC.</p>	<p><b>Basic-RNP 1 Procedure</b>                  SIERA - CANTO - MURRY - VH530 - GOODI - GUAVA[A050]                  Expect RNP AR APCH. Descend as directed by ATC.</p>

**DESCENT REQUIREMENT**

Cross GUAVA at 5 000 ft.  
**ABBEY 1G** expect to cross MUSEL at FL 130.  
**BETTY 1G** expect to cross MANGO at FL 130.  
**CANTO 1G / SIERA 1G** expect to cross CANTO at FL 130.  
**DO NOT DESCEND WITHOUT ATC CLEARANCE.**

**SPEED CONTROL**

Aircraft shall fly at 280 KIAS by MUSEL / MANGO / CANTO, or as directed by ATC .

**HOLDING**

The holding pattern is established at ABBEY / BETTY / CANTO. If holding is required, each flight will be instructed individually.

**ALTERNATIVE HOLDING**

In order to provide traffic management flexibility during peak periods of arrival or adverse weather situation in Hong Kong TMA, traffic may be instructed to hold at BAKER or other terminal holding (see ENR 3.6) as directed by ATC.

**LOSS OF COMMUNICATION**

In the event of a loss of communication aircraft shall comply with the descent requirement and the STAR track above. Thence: Maintain FL 130 to GUAVA. Join GUAVA holding pattern and descend to 5 000 ft in the hold, then carry out the appropriate RNP AR APCH.

**FMC Database Coding Reference for Hong Kong RNAV<sub>(GNSS)</sub> STARs**

**Designator: ABBEY 1G Runway 25L / Runway 25R**

STAR Designator	Sequence Number	Waypoint Name	Path Terminator	Fly-over	Turn Dir	Altitude (FT)	Speed (IAS)	Track (°M)	Distance (NM)
ABBEY 1G	01	ABBEY	IF	-	-	-	-	-	-
	02	MUSEL	TF	-	-	-	280	270	7.9
	03	TAMAR	TF	-	-	-	-	270	15.1
	04	MONTY	TF	-	-	-	-	246	11.8
	05	ALAPI	TF	-	-	-	-	270	6.5
	06	GUAVA	TF	-	-	5000	-	270	8.0

**Designator: BETTY 1G Runway 25L / Runway 25R**

STAR Designator	Sequence Number	Waypoint Name	Path Terminator	Fly-over	Turn Dir	Altitude (FT)	Speed (IAS)	Track (°M)	Distance (NM)
BETTY 1G	01	BETTY	IF	-	-	-	-	-	-
	02	MANGO	TF	-	-	-	280	344	8.0
	03	MONTY	TF	-	-	-	-	344	34.9
	04	ALAPI	TF	-	-	-	-	270	6.5
	05	GUAVA	TF	-	-	5000	-	270	8.0

**Designator: CANTO 1G Runway 25L / Runway 25R**

STAR Designator	Sequence Number	Waypoint Name	Path Terminator	Fly-over	Turn Dir	Altitude (FT)	Speed (IAS)	Track (°M)	Distance (NM)
CANTO 1G	01	CANTO	IF	-	-	-	280	-	-
	02	MURRY	TF	-	-	-	-	045	8.7
	03	VH530	TF	-	-	-	-	031	13.2
	04	GOODI	TF	-	-	-	-	031	8.1
	05	GUAVA	TF	-	-	5000	-	035	6.4

**Designator: SIERA 1G Runway 25L / Runway 25R**

STAR Designator	Sequence Number	Waypoint Name	Path Terminator	Fly-over	Turn Dir	Altitude (FT)	Speed (IAS)	Track (°M)	Distance (NM)
SIERA 1G	01	SIERA	IF	-	-	-	-	-	-
	02	CANTO	TF	-	-	-	280	159	21.8
	03	MURRY	TF	-	-	-	-	045	8.7
	04	VH530	TF	-	-	-	-	031	13.2
	05	GOODI	TF	-	-	-	-	031	8.1
	06	GUAVA	TF	-	-	5000	-	035	6.4

**Waypoint Coordinates**

Waypoint Name	Coordinates (WGS84)
ABBEY	22 16 11.00N 114 55 25.92E
ALAPI	22 09 52.88N 114 12 13.09E
BETTY	21 29 10.82 N 114 33 31.92 E
CANTO	21 39 02.63N 113 42 25.09E
GOODI	22 04 09.88N 113 59 48.59E
GUAVA	22 09 36.10N 114 03 36.30E
MANGO	21 36 49.00N 114 30 53.00E

Waypoint Name	Coordinates (WGS84)
MONTY	22 10 06.26N 114 19 15.68E
MURRY	21 45 28.37N 113 48 41.97E
MUSEL	22 15 53.99N 114 46 52.13E
SIERA	21 59 12.00N 113 33 12.00E
TAMAR	22 15 21.00N 114 30 37.00E
VH530	21 57 05.86N 113 55 36.22E